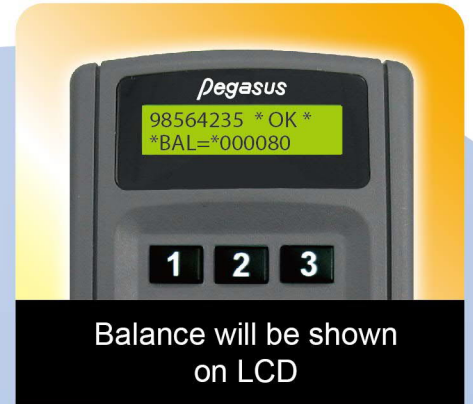
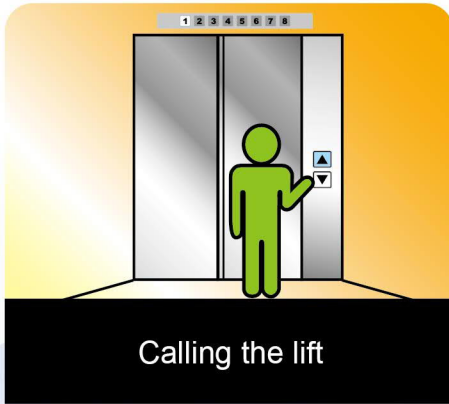




Elevator payment system

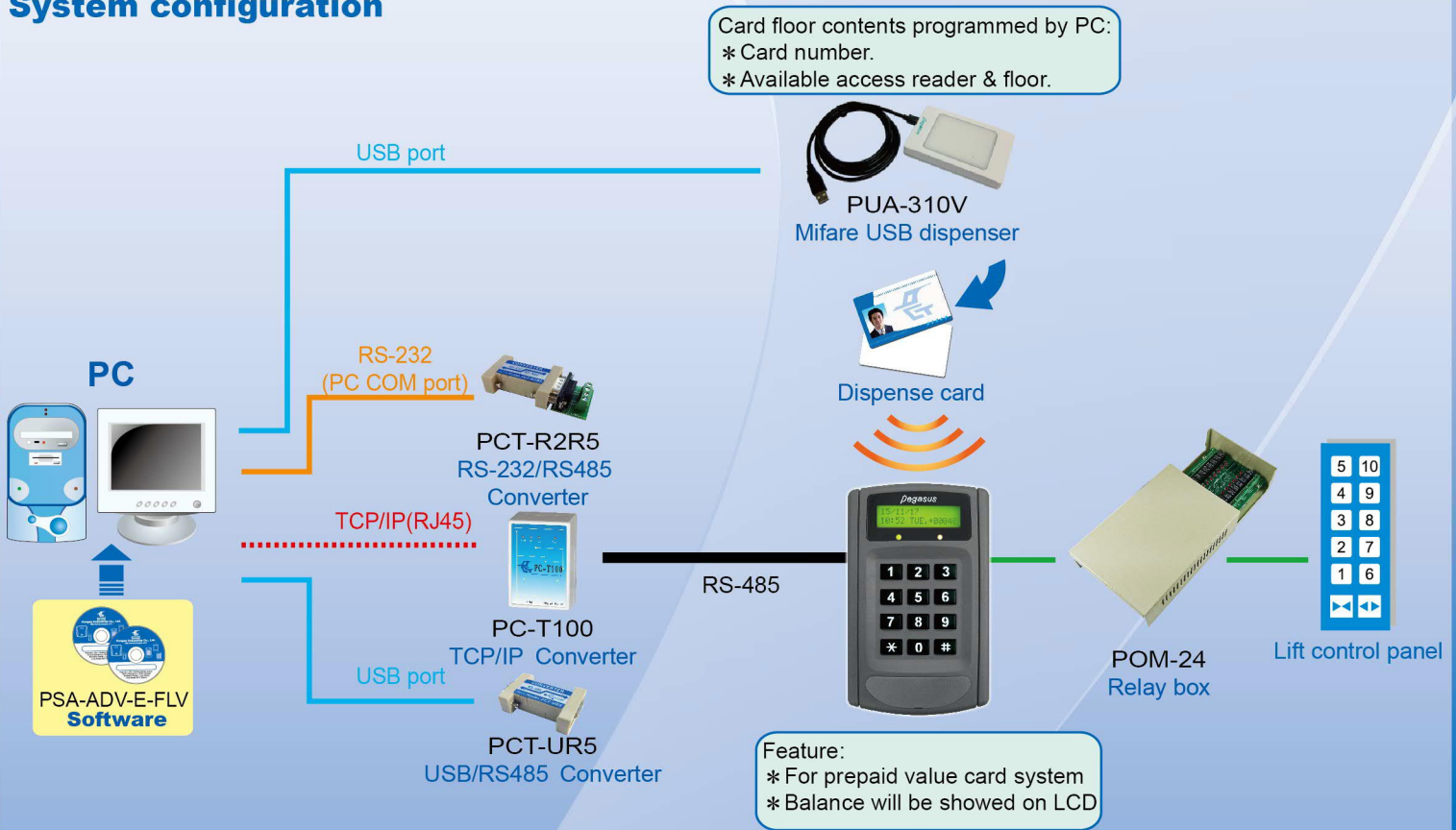


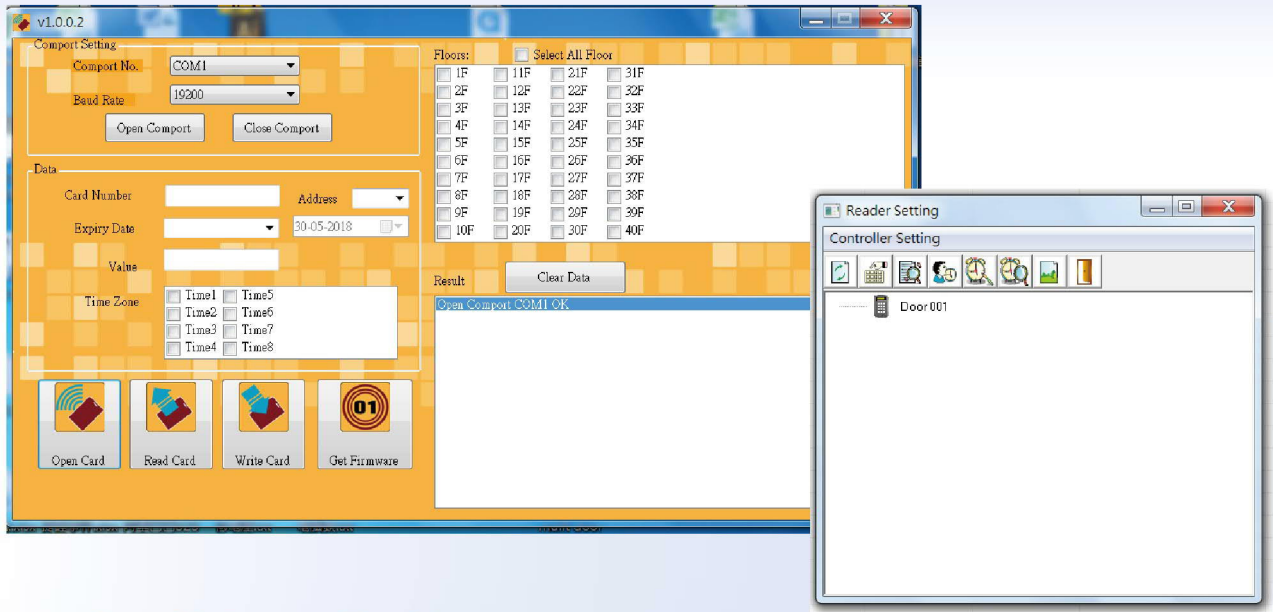
Introduction

- This system is designed to pay elevator usage fees by contactless prepaid smartcard. Supporting on-line or standalone operation.
- The card dispensing software defines and stores the ID number, building number, expiry date, prepaid amount and accessible floors into the card.
- Supports access control for maximum 40 floors.
- The controller would alarm when the value is less than 15 units by error sound.
- Supports user card enrollment from controller operation or software upload.
- Prepaid card is locked with specific key to increase security of data.
- For easy different project management, the key can be specified according to request.

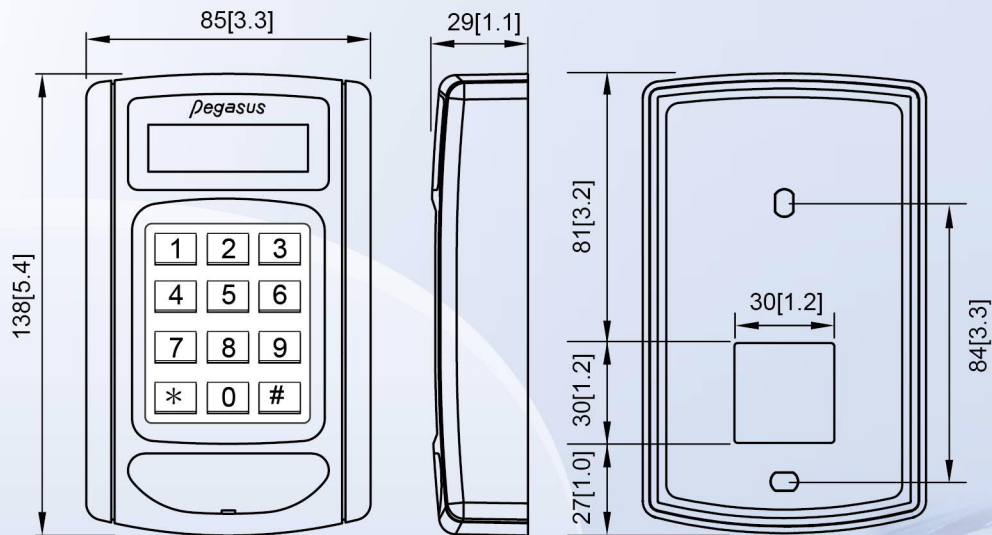


System configuration





Dimension: Unit: mm[inch]



Ordering information

- PP-6750VL/M1R5-FLV** : Elevator access controller
- PUA-310V-0M2R2Y4** : Mifare dispenser(RS-232 interface)
- PUA-310V-0M2U2Y4** : Mifare dispenser(USB interface)
- PG-OUTMOD-8** : 8 floors relay box
- POM-24** : 24 floors relay box
- PCT-R2R5** : RS-232/RS485 Converter
- PC-T100** : TCP/IP Converter
- PCT-UR5** : USB/RS485 Converter
- PSA-ADV-E-FLV** : Elevator payment system software



PONGEE INDUSTRIES CO., LTD.

5F., No.738, Chung-Cheng Rd., Chung-Ho District, New Taipei City 23511, Taiwan

Tel : 886-2-82280198

Fax : 886-2-82280191

E-mail : pongee@pongee.com.tw

Website: <http://www.pongee.com>

We reserve the right to change the specification without prior notice or obligation!



20180530