

Mini Electromagnetic Lock



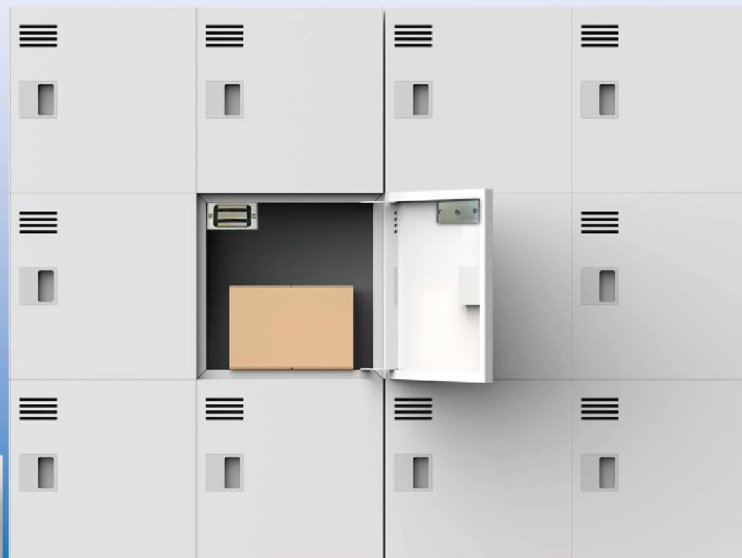
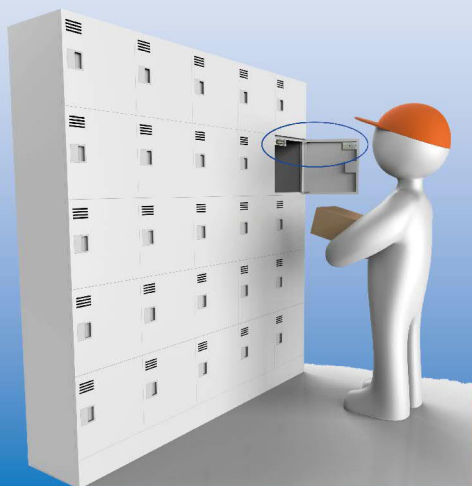
PML-080A

Product description

- Lock integrated one, simplifying installation procedure.
- The frame of lock body consists of aluminum alloy, strong crashworthiness.
- Compact size, installation as required (pulling type, sliding type).
- Suitable for drawers, lockers, mailbox, postbox and similar devices to be used as management.

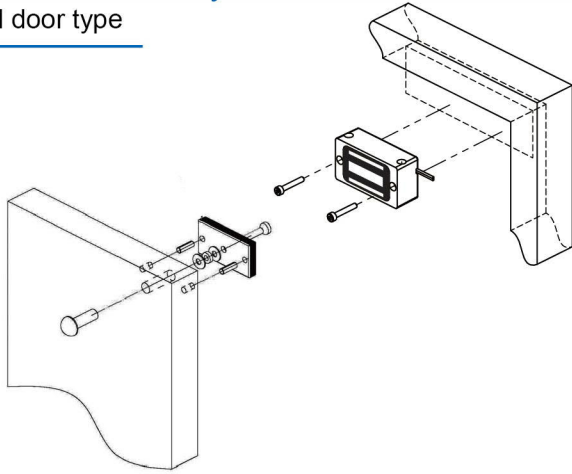
Specifications

- Electric magnet size: 70 x 38 x 25 mm
2.8 x 1.5 x 1.0 inch
- Armature size : 60 x 32 x 8 mm
2.4 x 1.3 x 0.3 inch
- Holding force : 100Lbs~145Lbs / 45Kgs~66Kgs
- Voltage / Current : 12VDC(60mA)~24VDC(110mA)±5%
- Material : Electric magnet(Aluminum alloy)
Armature(Low-carbon steel)

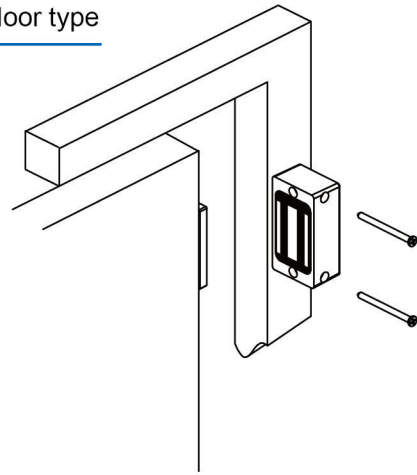


Installation assembly

Pull door type

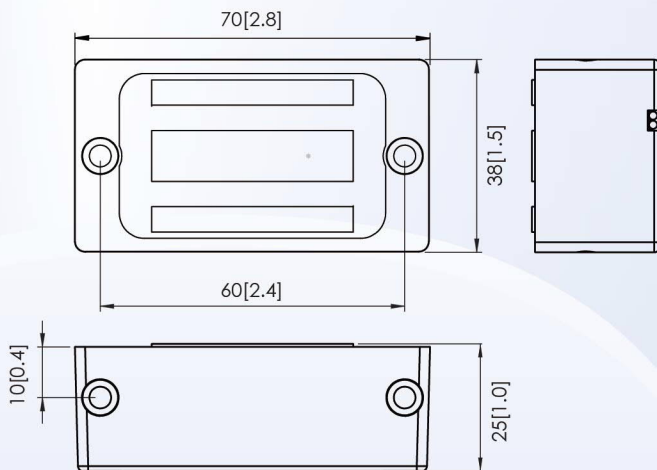


Sliding door type

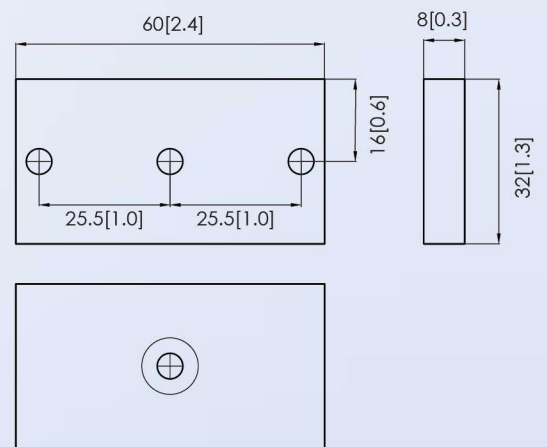


Dimensions: mm[inch]

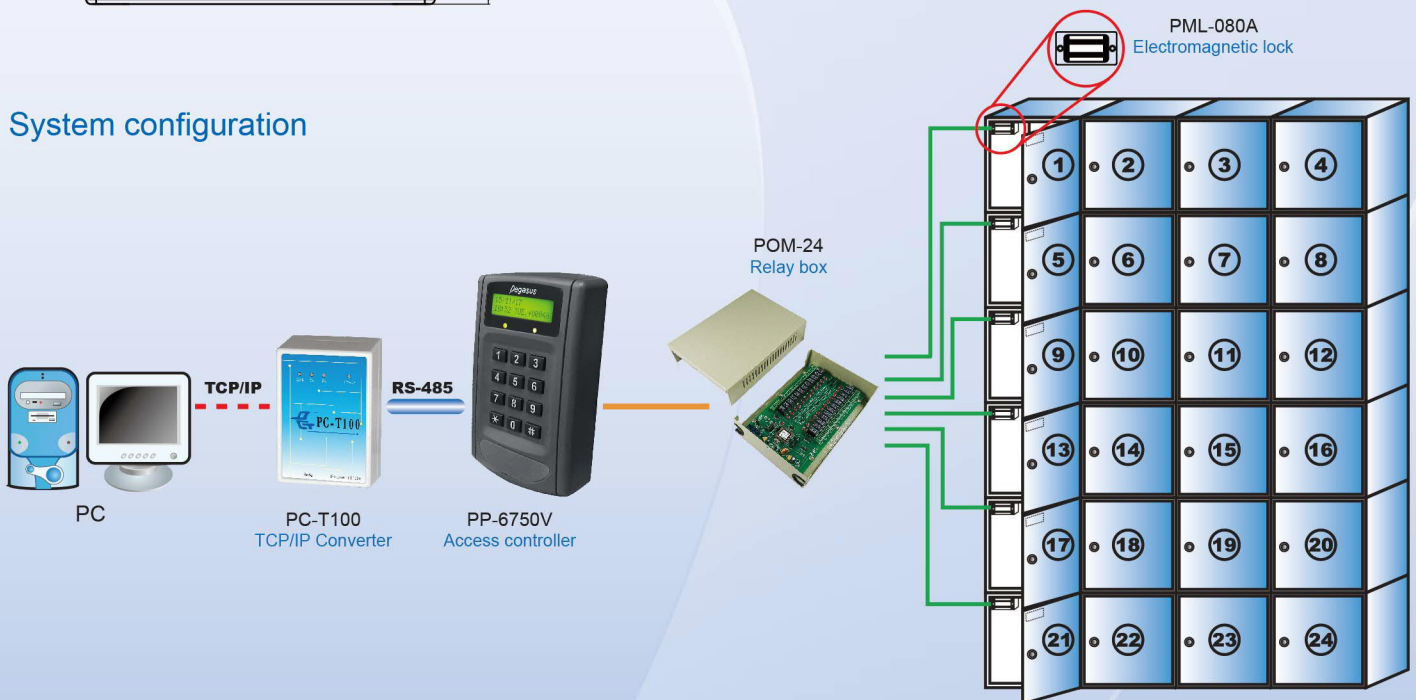
Electric magnet



Armature



System configuration



PONGEE INDUSTRIES CO., LTD.

5F., No.738, Chung-Cheng Rd., Chung-Ho District, New Taipei City 23511, Taiwan

Tel : 886-2-82280198

Fax : 886-2-82280191

E-mail : pongee@pongee.com.tw

Website: <http://www.pongee.com>

We reserve the right to change the specification without prior notice or obligation!



FM 39868



20181227