

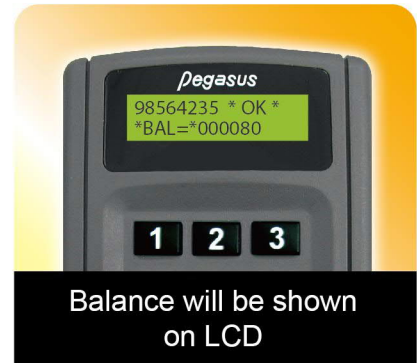
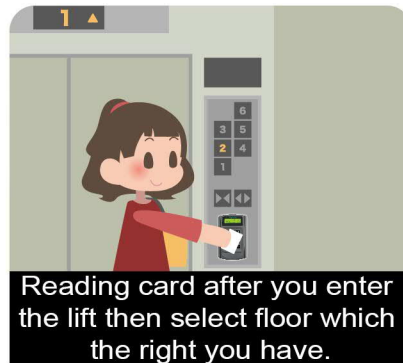
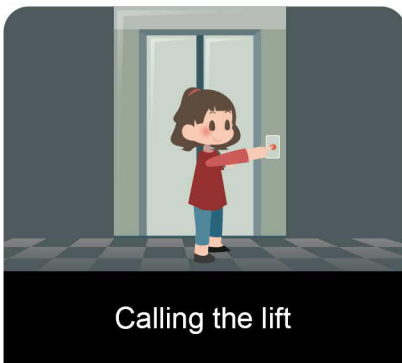
# Prepaid Access Control System

## Introduction

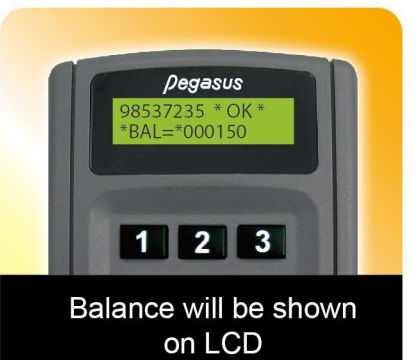
- This system is designed to pay usage fees by contactless prepaid smartcard. Supporting on-line or standalone operation.
- The card dispensing software defines and stores the ID number, building number, expiry date, prepaid amount and accessible floors into the card.
- Supports customized for billing. Ex. Pay-per-use, hour, daily...etc.
- Supports user card enrollment from controller operation or software upload.
- Prepaid card is locked with specific key to increase security of data.
- For easy different project management, the key can be specified according to request.



**For example 1:** Elevator payment system(Pay-per-use), supports access control for maximum 40 floors.

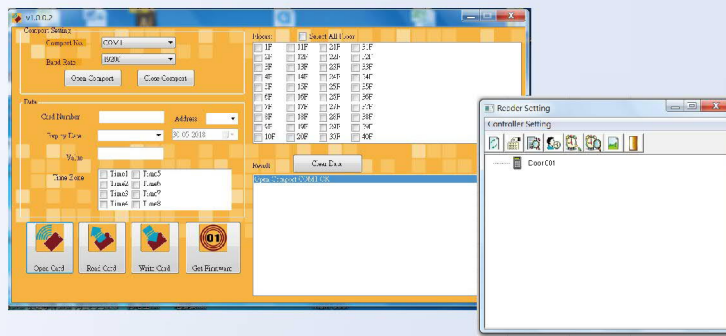
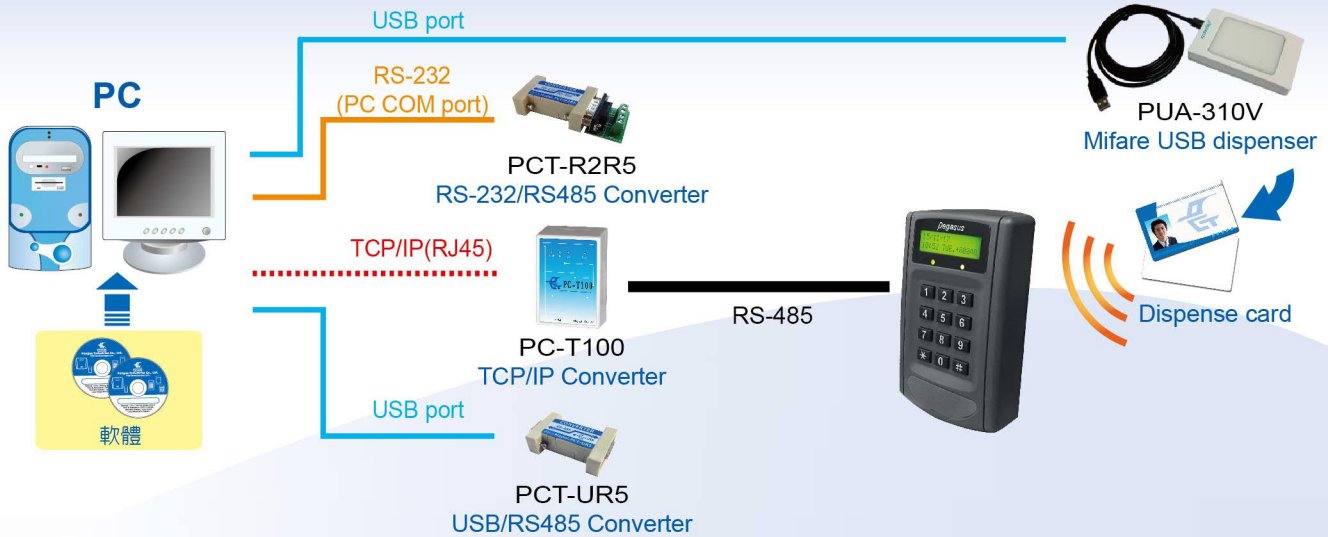


**For example 2:** Conference room payment system(Pay-per-daily)

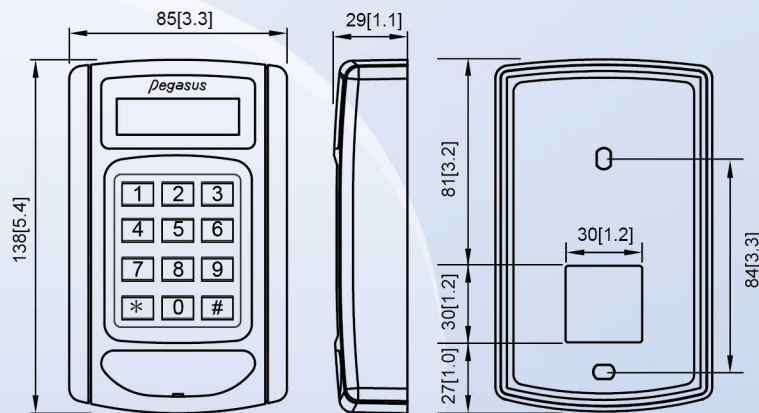


## System configuration

Card contents programmed by PC



## Dimension: Unit: mm[inch]



## Ordering information

- PP-6750VX/M1R5-ARC : Conference room access controller
- PP-6750VX/M1R5-FLV : Elevator access controller
- PUA-310V-0M2R2Y4 : Mifare dispenser(RS-232 interface)
- PUA-310V-0M2U2Y4 : Mifare dispenser(USB interface)
- PCT-R2R5 : RS-232/RS485 Converter
- PC-T100 : TCP/IP Converter
- PCT-UR5 : USB/RS485 Converter
- PSA-ADV-E-MRV : Prepaid value system software
- PSA-ADV-E-FLV : Elevator payment system software

## PONGEE INDUSTRIES CO., LTD.

5F., No.738, Chung-Cheng Rd., Chung-Ho District, New Taipei City 23511, Taiwan

Tel : 886-2-82280198

Fax : 886-2-82280191

E-mail : pongee@pongee.com.tw

Website: <http://www.pongee.com>

We reserve the right to change the specification without prior notice or obligation!



20190220