



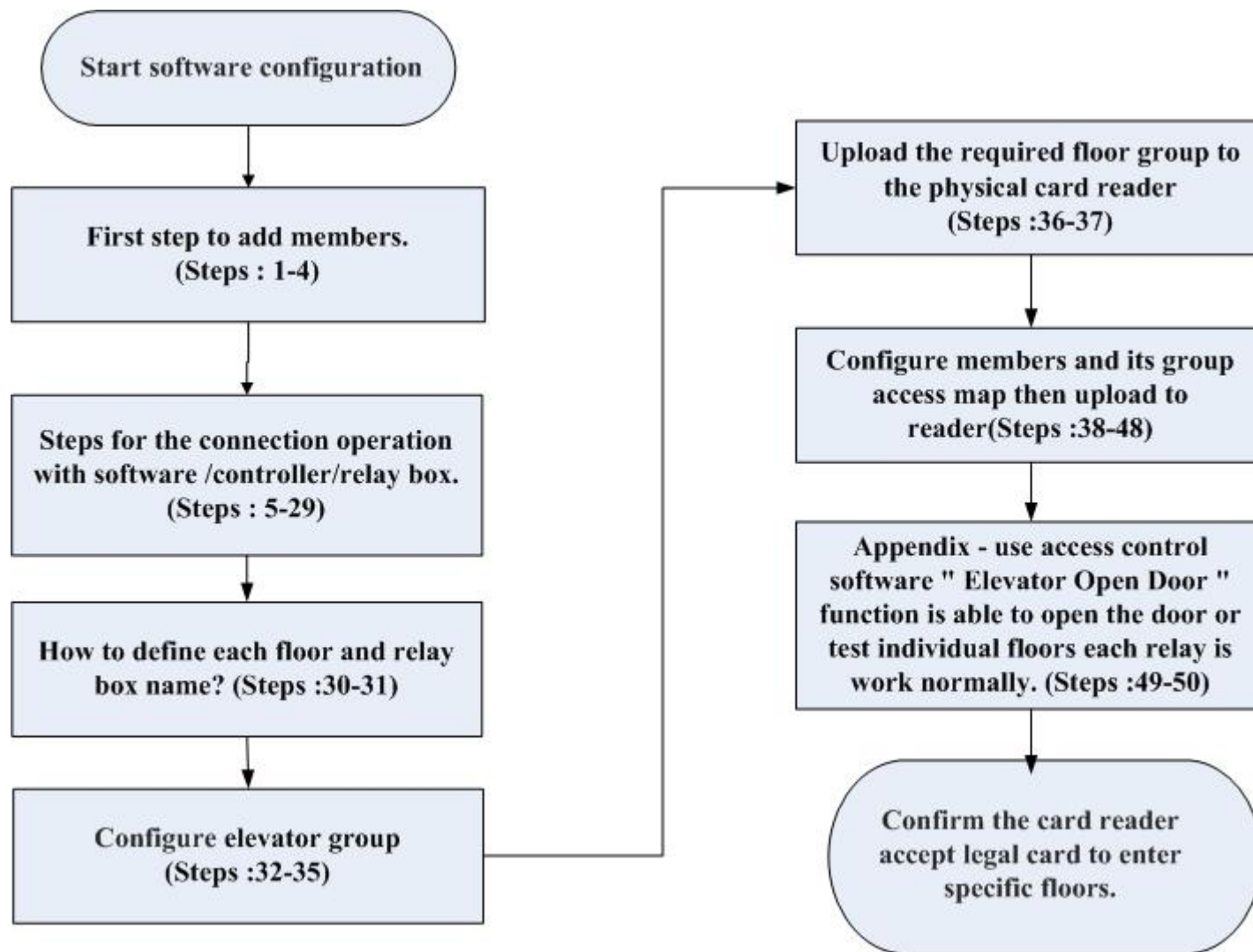
Lift Access Control Software Brief Setting Introduction

(Access Software: PST-ADV-E-ELE Series)

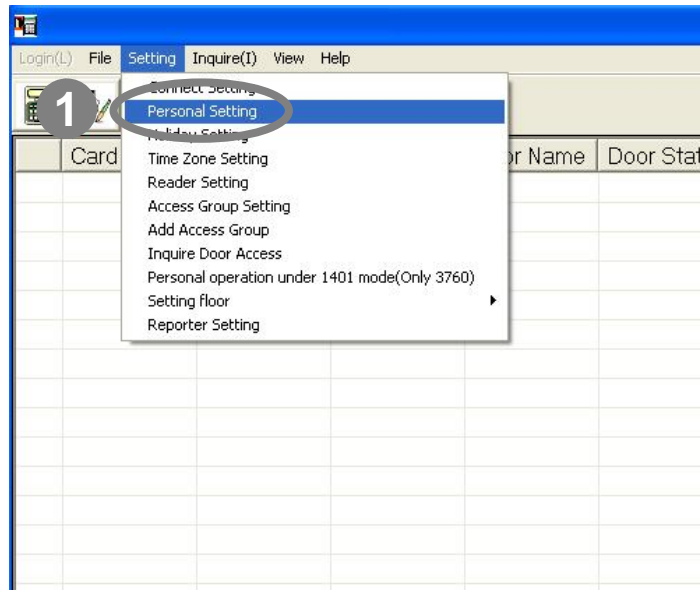


Pongee Industries Co., Ltd.

Copyright ©Pongee Industries Co., Ltd.



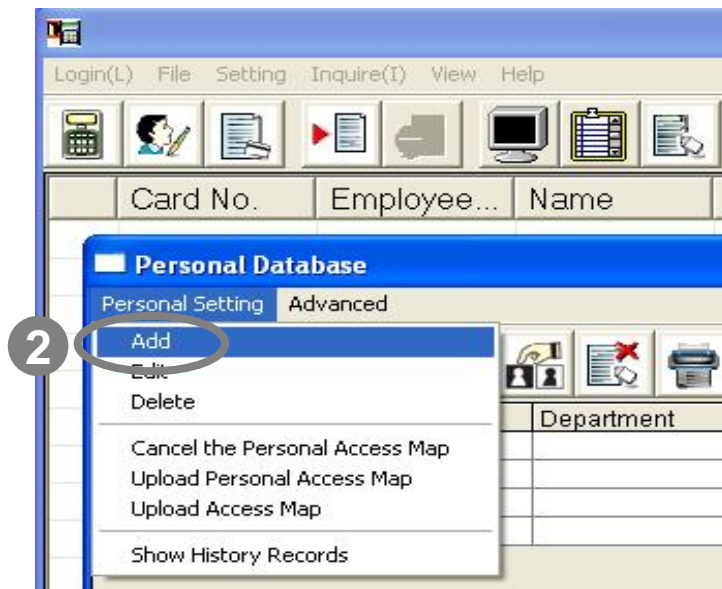
Lift Access Control Software Brief Setting Introduction



The example illustrates: The ELE series access software not only support access control function but also joined the lift access control, following below steps for the operation setting details

Instructions: First step to add members

1 :Click the function menu "Setting (S)" → drop-down menu then click the "Personal Setting".



2 :Click the "Add" icon to enter the settings for adding members.

Lift Access Control Software Brief Setting Introduction

The screenshot shows the 'Personal Map Setup' window in the Lift Access Control Software. The window has a blue title bar and a standard Windows-style menu bar (Login(L), File, Setting, Inquire(I), View, Help). Below the menu bar is a toolbar with icons for various functions. The main area of the window is divided into two sections: 'Personal Database' and 'Personal Map Setup'. The 'Personal Map Setup' section contains a 'Photo' placeholder and several input fields: 'Name' (Pegasus01), 'Employee ID' (empty), 'Department' (dropdown), 'Card No.' (00000001), 'Password' (1111), 'Access Group Setting' (Legal Access dropdown), 'Card Issued Date' (5 /30/2013 dropdown), 'Initial Date' (5 /30/2013 dropdown), and 'Invalid Date' (12/31/2199 dropdown). A circular callout labeled '3' highlights the input fields, and a rectangular callout labeled '4' highlights the 'OK' button. The 'OK' button is a small button with a checkmark icon and the text 'OK'. The 'Cancel' button is a small button with an 'X' icon and the text 'Cancel'. The 'Previous' button is a small button with the text 'Previous'. The status bar at the bottom of the window shows 'Total records: 4'.

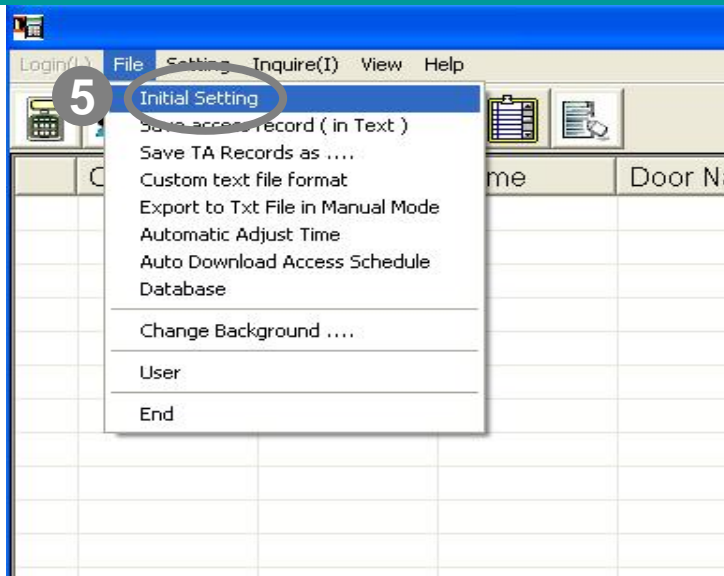
Instructions: First step to add members

3 : To filled in all the necessary information in "Personal Map Setup" window.

4 : Finally, press the " OK " button to save all settings.

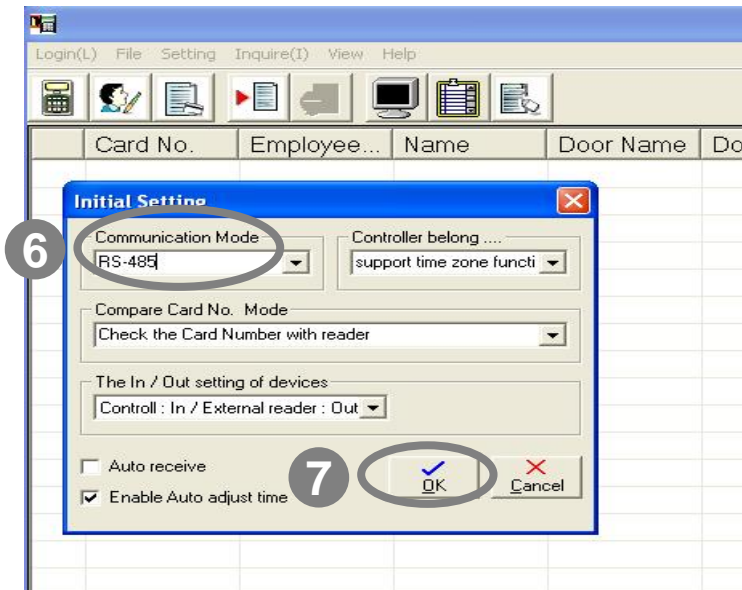
* Remark: Please repeat steps to add all members till complete lift access control settings.

Lift Access Control Software Brief Setting Introduction



Instructions: Following the software setting steps: "Initial Setting" → "Connection Setting" → "Reader Setting" (For adding lift access controller and relay box)

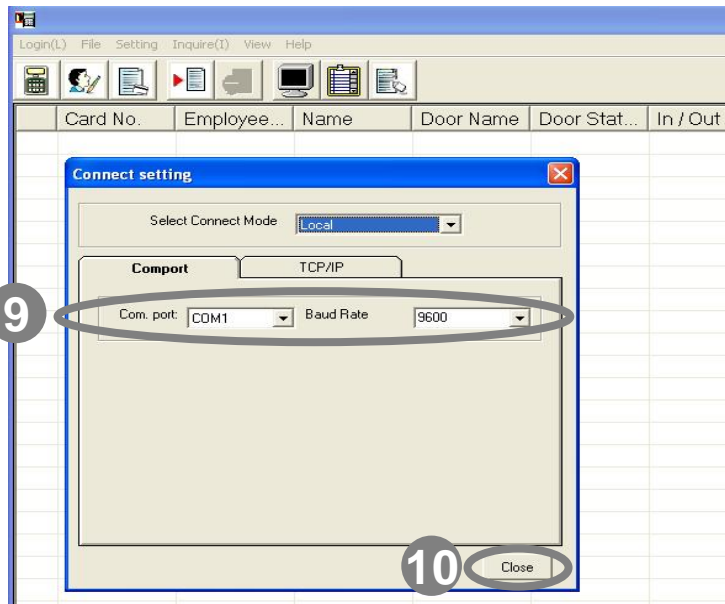
5 : Click the menu "File" → drop-down menu, than click "Initial Setting".



6 : Make sure to select correct "communication mode" in the controller and wiring.

7 : Press " OK " to save the settings.

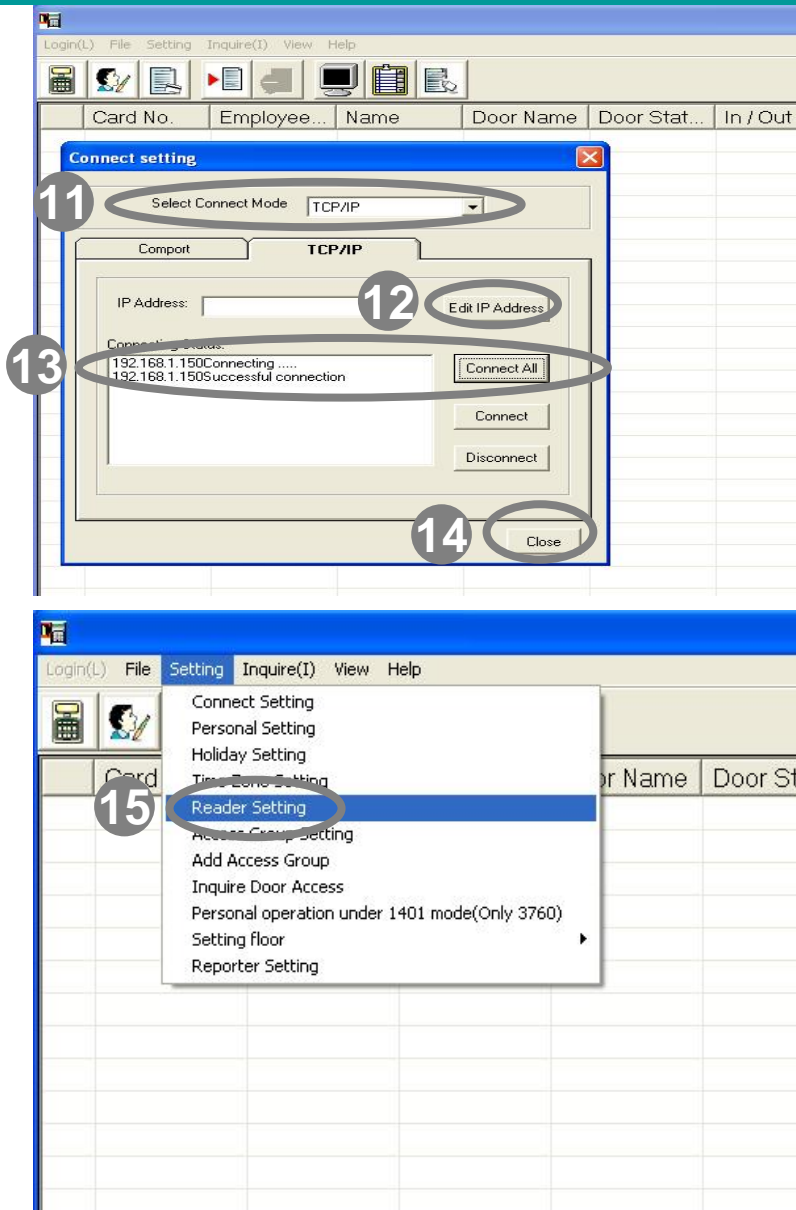
Lift Access Control Software Brief Setting Introduction



Instructions: Following the software setting steps: "Initial Setting" → "Connection Setting" → "Reader Setting"
(For adding lift access controller and relay box)

- 8** :Click the menu " Setting (S) " → drop-down menu then click " Connect Setting ".
- 9** :If connected to Com port interface, at "Select Connection Mode ", please select "Com port" to verify the physical port number and Buld rate consistent with computer and please ensure compare with current devices setting.
- 10** : Press " Close " to complete the setting.

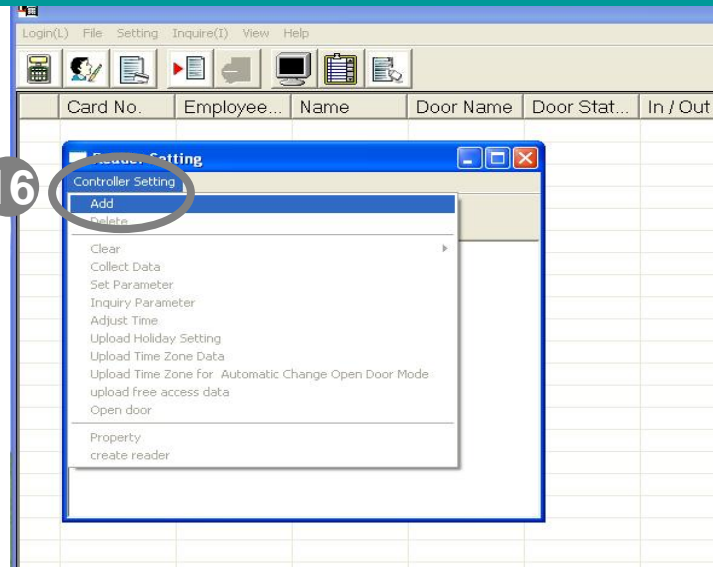
Lift Access Control Software Brief Setting Introduction



Instructions: Following the software setting steps: “Initial Setting ”→” Connection Setting ”→” Reader Setting ”
(For adding lift access controller and relay box)

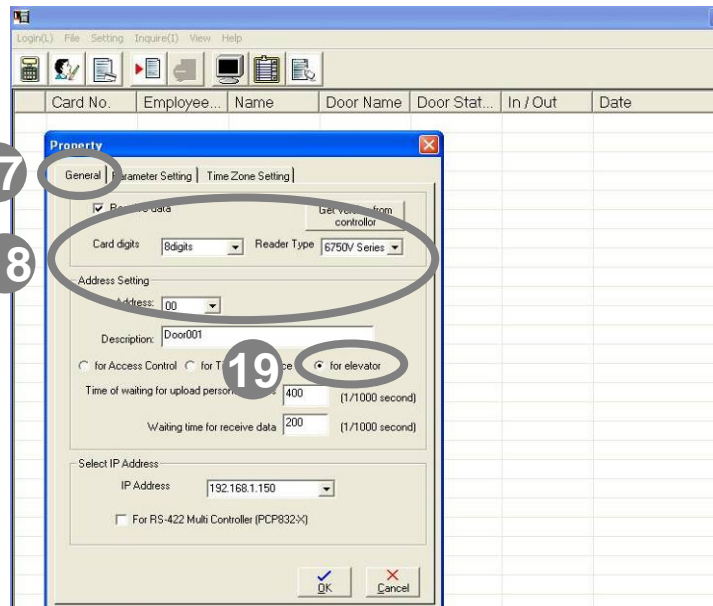
- 11** :If connected to TCP/ IP interface, at "Select Connection Mode " ,please select to "TCP / IP“.
- 12** :Select to "Edit IP Address" to add a new installed TCP / IP converter (for example: PC-T100) IP address.
- 13** :Click "Connect All " button, to detect all TCP /IP devices automatically, make sure each PC-T100 IP state to -" Successful connection”
- 14** :Press " Close " to complete the setting.
- 15** :Click the menu "Setting (S)“→drop-down menu then click "Reader Setting“.

Lift Access Control Software Brief Setting Introduction



Instructions: Following the software setting steps:
“Initial Setting ”→“ Connection Setting ”→“
Reader Setting ”
(For adding lift access controller and relay box)

16 : "Reader setting " → "controller settings"
→ drop-down menu ,please select to "Add " for adding new controller.



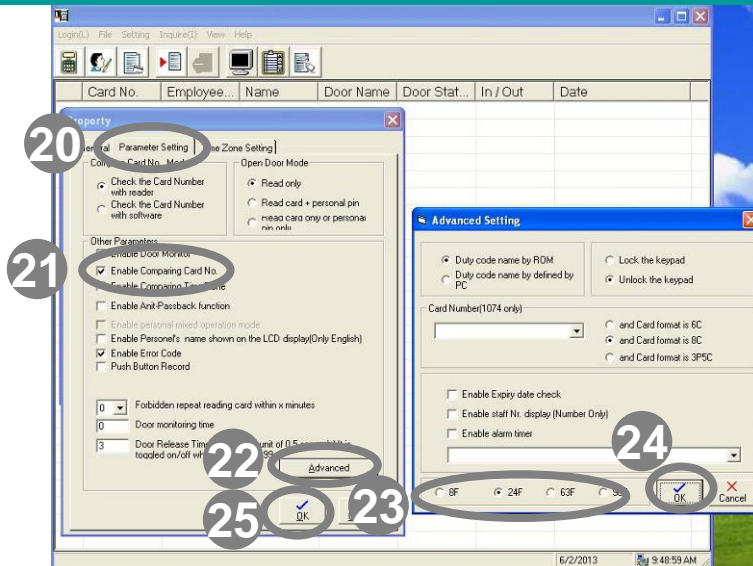
17 :Click "General sheet",the system switch to corresponding seting page automatically.

18 : "Card digits ", "Reader Type "and "Address ", setting, please ensure compare with current devices setting.

19 : Please select to " for elevator“ function.

Lift Access Control Software Brief Setting Introduction

Instructions: Following the software setting steps:
“Initial Setting ”→“ Connection Setting ”→“
Reader Setting ”
(For adding lift access controller and relay box)



20 :Click " Parameter Setting" sheet, the system switch to the corresponding setting page automatically.

21 :Please select to "Enable Comparing Card No. "

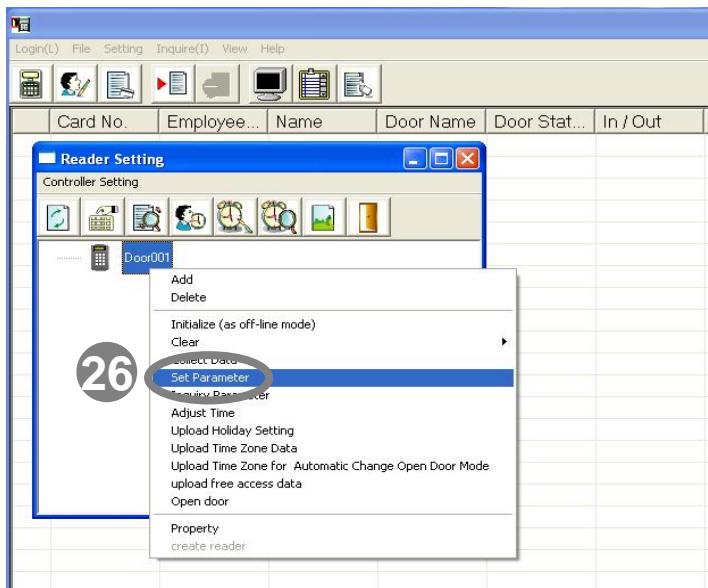
22 :Please enter " Advanced ".

23 :Please select the type of relay box you installed.

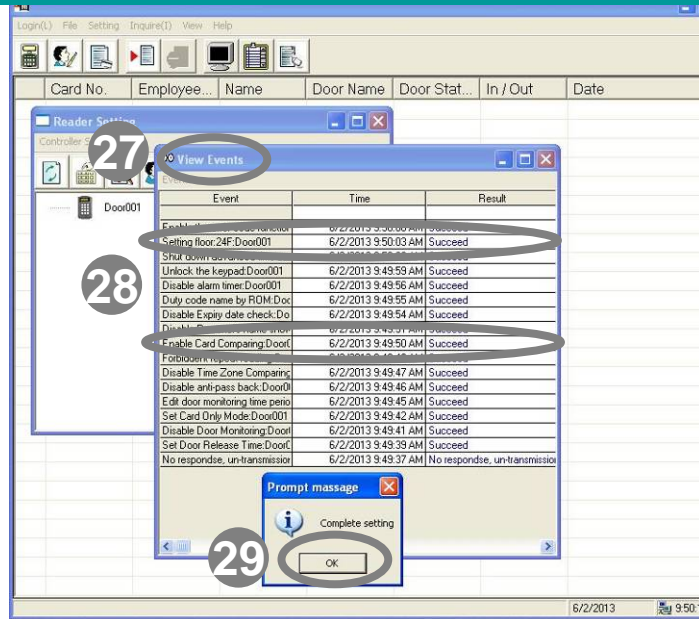
24 :Press " OK " to complete setting.

25 :Press " OK " to save the setting.

26 :Select to specific controller and press mouse right button to “Set parameter “



Lift Access Control Software Brief Setting Introduction



**Instructions: Following the software setting steps:
“Initial Setting ”→“ Connection Setting ”→
Reader Setting ”
(For adding lift access controller and relay box)**

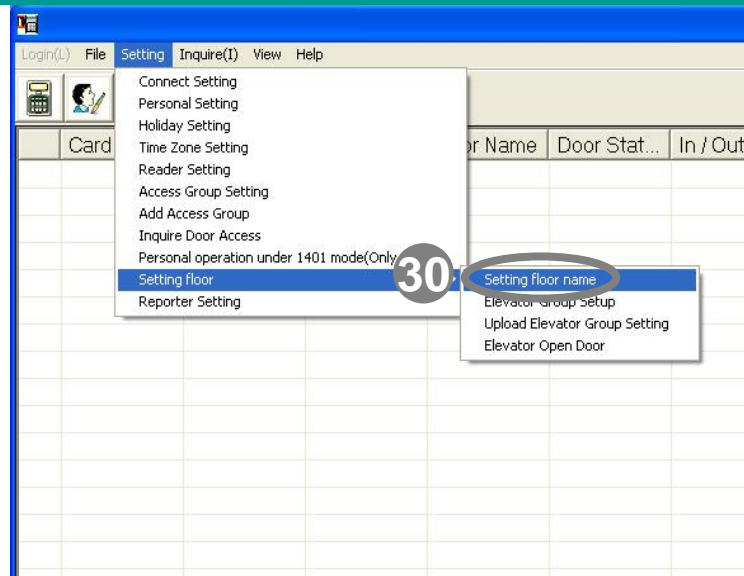
27 : System shows "view events "message box.

28 : Please check " Setting floor relay box" and
" Enable Card Comparing " function result is
"Succeed ".

29 : Finally, click "OK" button to the end.

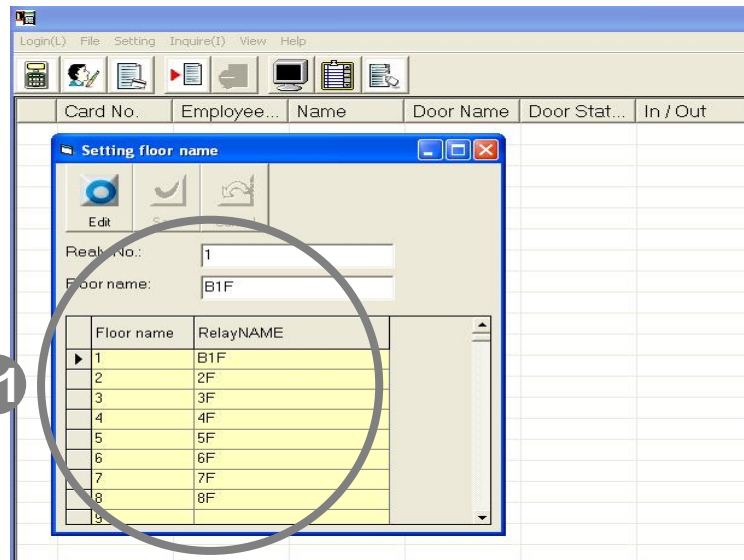
pegasus

Lift Access Control Software Brief Setting Introduction



Instructions: how to define each floor and relay box name?

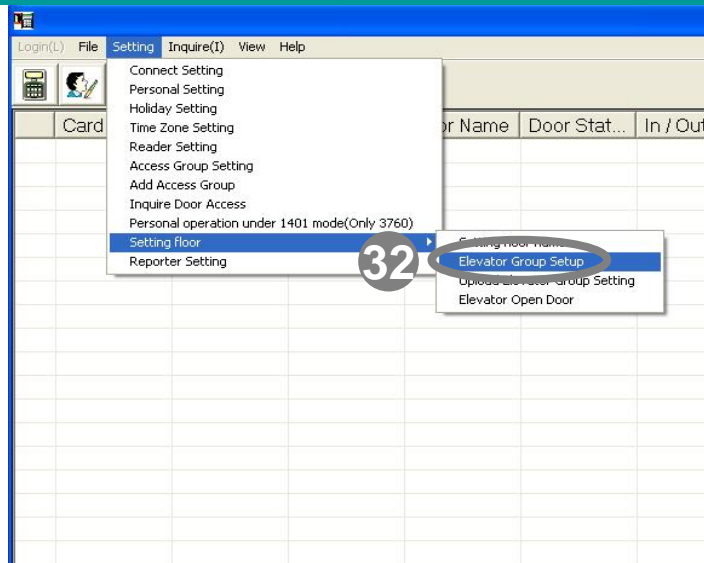
30 :Click the menu " Setting (S) " → "Setting Floor" → drop-down menu → " Setting floor name ".



31 :Select the "Floor Name" (Relay NAME) you want to change, click on "Edit ", after editing new name, finally click to "Save".

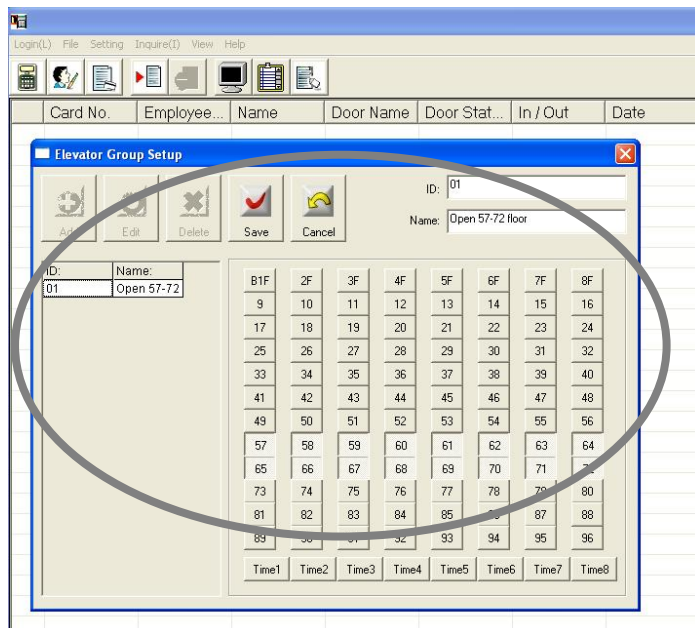
pegasus

Lift Access Control Software Brief Setting Introduction



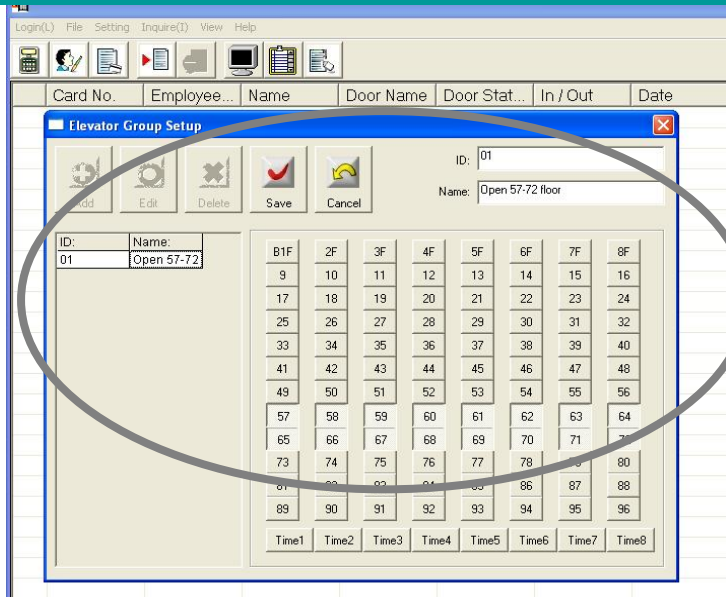
Instructions: Elevator Groups Setup, this helps to define a certain person as a elevator group, which is to set the rules for a certain person allows to get in/out for an indicate floor, on the other hand if not joined floor cards are not allow to enter door.

32 :Click the menu "Setting(S)"→drop-down manu→ "Setting Floor" →drop-right menu→click "Elevator Group Setup".





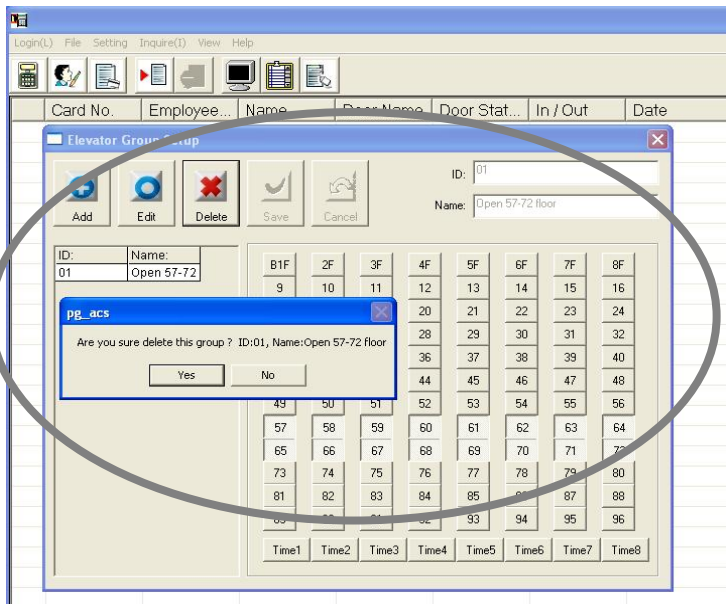
33 :Elevator Group allows to "Add", "Edit" and "Delete" groups, Each group compare with its relay box actions
(1) Add-Press the button "Add", enter the "ID" and "Name (group name)" at right top corner, and select the relay floors (floor name), then press the "Save" button.


Lift Access Control Software Brief Setting Introduction



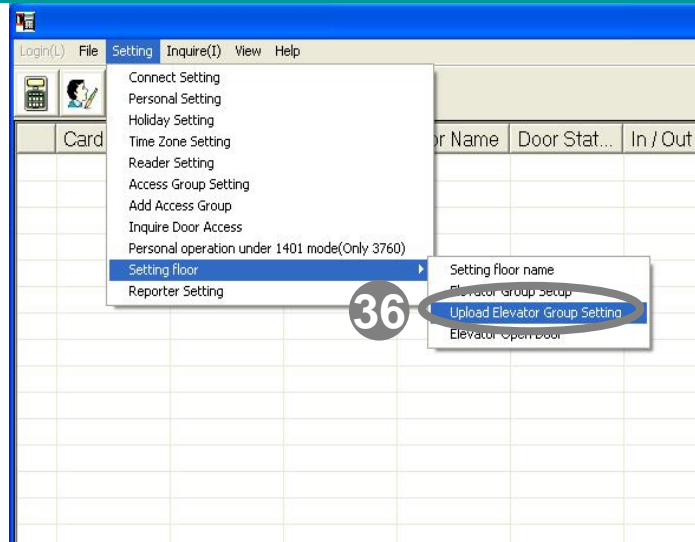
Instructions: Elevator Groups Setup, this helps to define a certain person as a elevator group, which is to set the rules for a certain person allows to get in/out for an indicate floor, on the other hand if not joined floor cards are not allow to enter door.

34 : (2) Edit- Press the button "E  ", enter the "ID" and "Name (group name)" at top right corner, and change the relay floors (floor name), then press the "  Save" button.



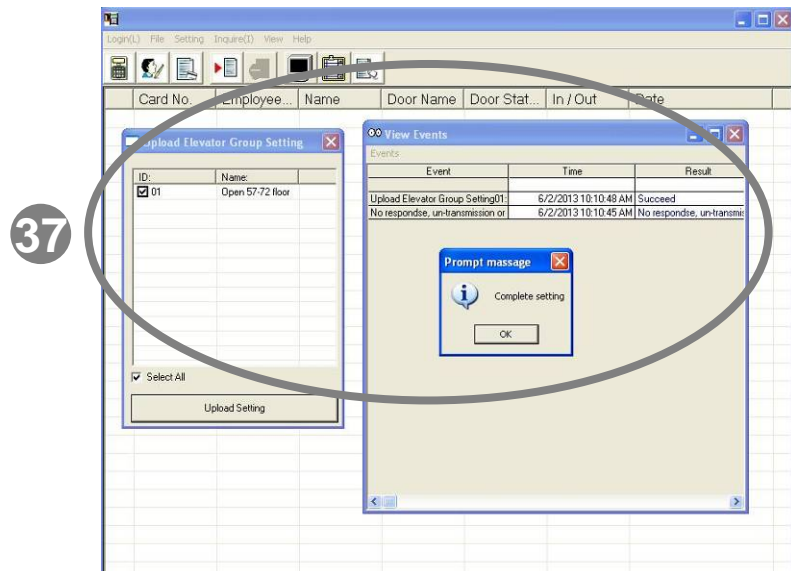
35 : (3) Delete- Press the left gray box "ID/Name field ", group you want to delete then press "Delete  " button, and double confirm by " Yes/No" message box, please press " Yes " to delete.

Lift Access Control Software Brief Setting Introduction



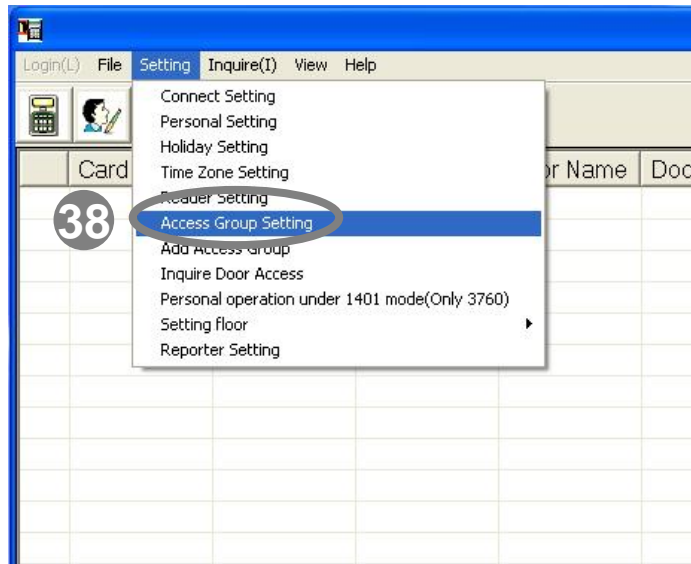
Instructions: After complete software floor groups setting, please ensure to upload the required floor group to the physical card reader

36 :Click the menu " Setting (S) " →drop-down menu → "Setting Floor" →drop-right menu → " Upload Elevator Group Setting" .



37 :Select the upper-left corner of the floor box group, click the bottom-left of the "Upload Setting" and pop out "View Events" window, make sure that the " Upload Elevator Group" result are "Succeed ",finally, click " OK "button to the end.

Lift Access Control Software Brief Setting Introduction

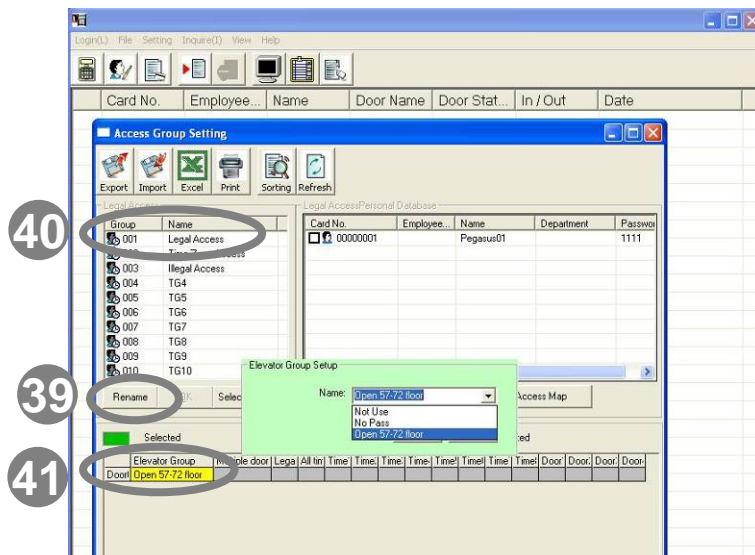


Instructions: Configure members and its group access map and upload to reader

38 :Click the menu "Setting (S)" → drop-down menu → click "Access Group Setting".

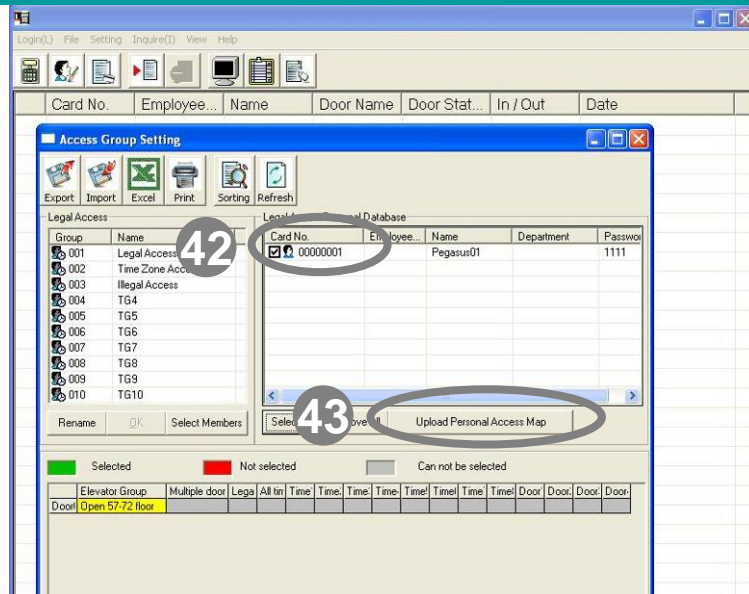
39 :The upper-left groups members allow to change new name by "Rename" button.

40 :We suggest to define group name as real environment, this is more easily to identify and manage in the future.



41 :Click card readers "Elevator Group (yellow block)" after green block appears, click on the original in the "Elevator group setup" set-off group name (Previous steps 32 to 35).

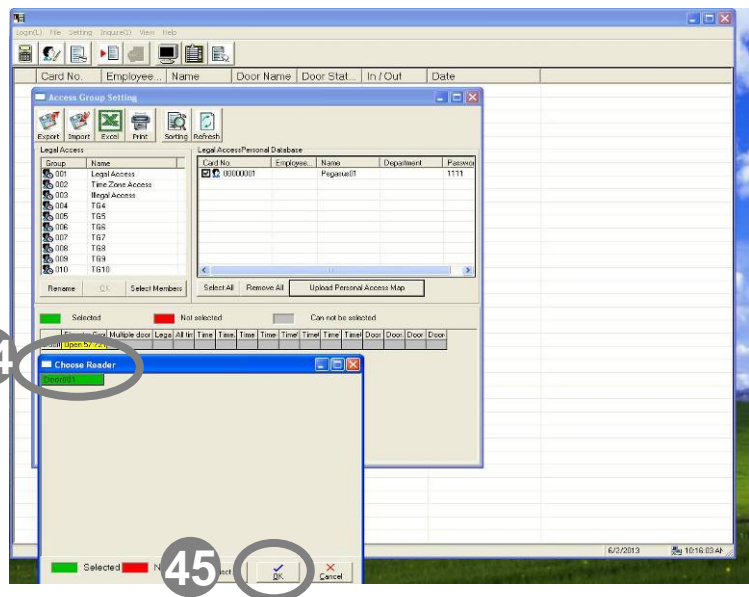
Lift Access Control Software Brief Setting Introduction



Instructions: Configure members and its group access map and upload to reader

42 :Please check the person you want to upload.

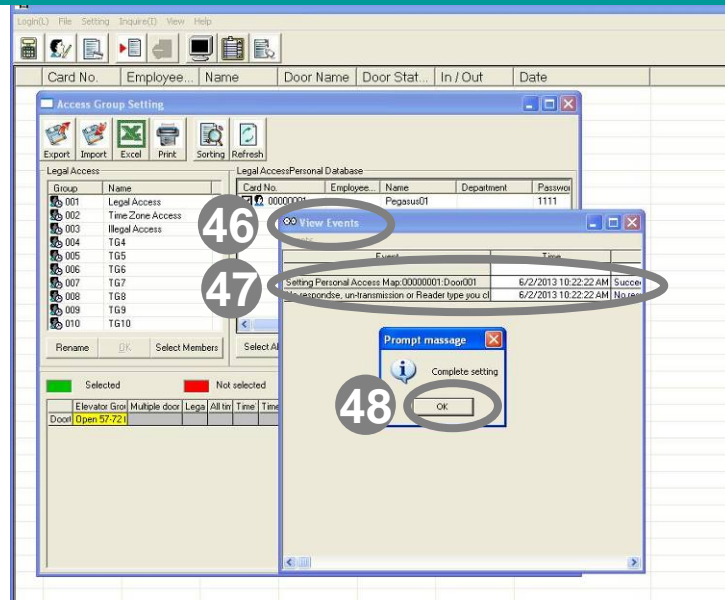
43 :Click " Upload Personal Access Map " button to upload personal legal data.



44 : At" Choose Reader" message box, please choose the reader as " Green color " you want to upload.

45 :Click "OK" button to upload.

Lift Access Control Software Brief Setting Introduction

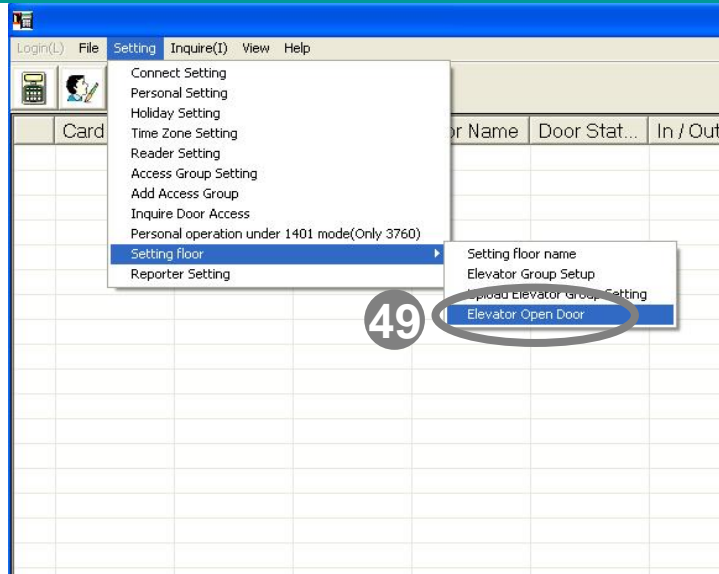


Instructions: Configure members and its group access map then upload to reader

- 46 : It shows "view events "window.
- 47 : Ensure events for " Setting Personal Access Map" all groups and personnel card number is uploaded to the card reader to "success " status.
- 48 : After confirmation, press "OK" to complete setting, and each personnel card number can be test to ensure whether the person belongs to its permission of the available floor.

pegasus

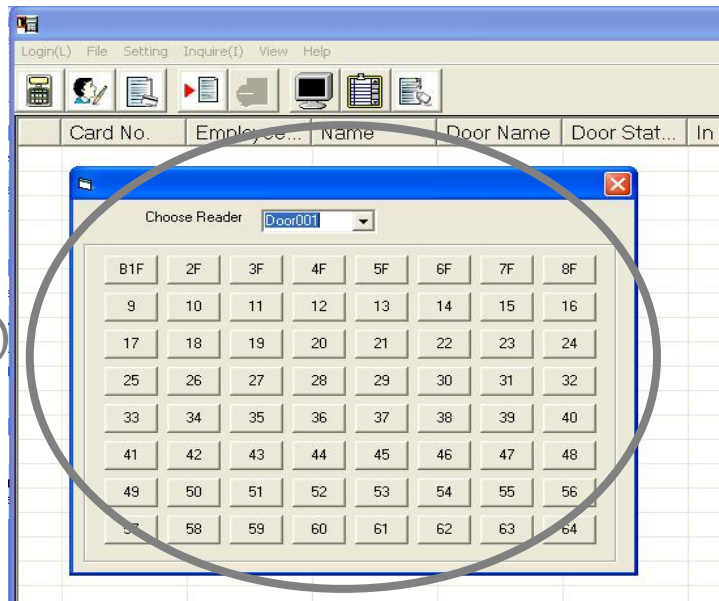
Lift Access Control Software Brief Setting Introduction



Instructions: Appendix - " Elevator Open Door " function is able to set open the door or test individual floors to make sure each relay is work normally.

***Note: this function now only support for " PP-6750V Series " and " PP-85 Series "**

49 :Click the menu " Setting (S) " → drop-down menu → click "Setting Floor" → drop-right menu → click "Elevator Open Door".



50 :From " Choose Reader " options to select card reader, this allows you to select up to max 64 relays (floors). Click on the buttons to open the door (relays will be action).