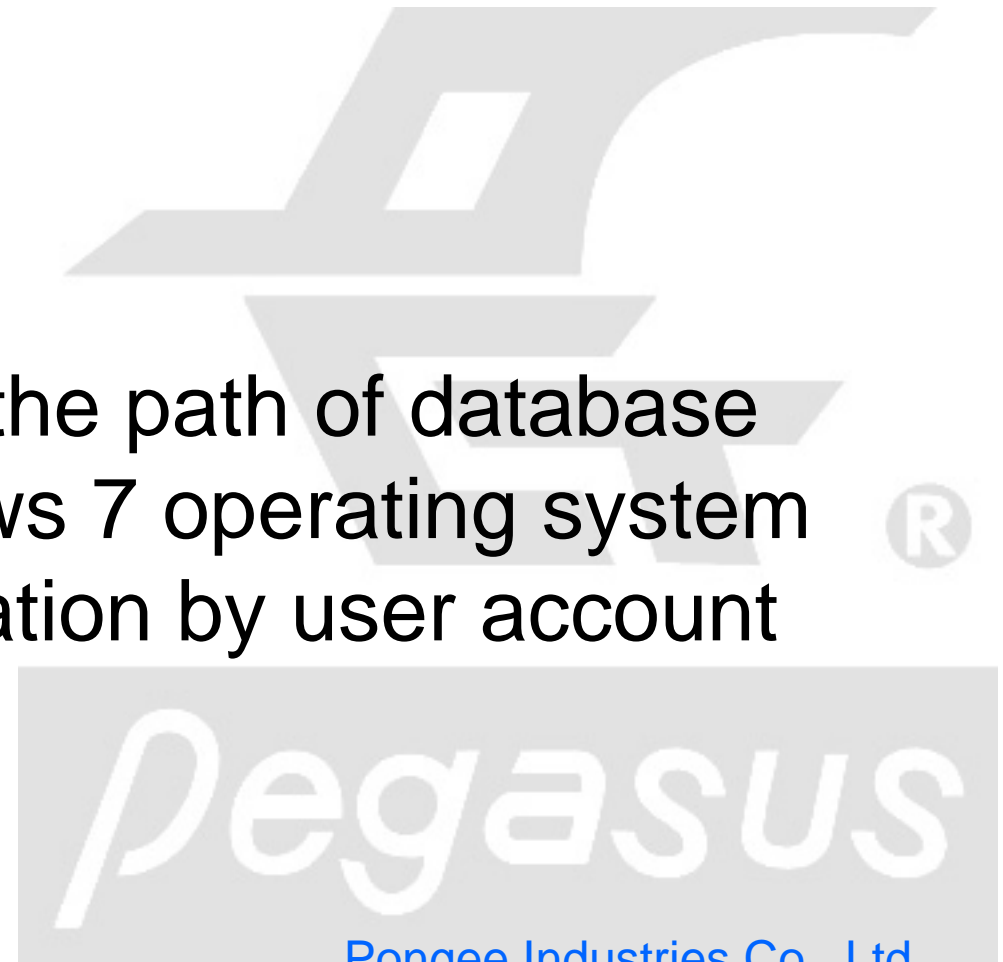




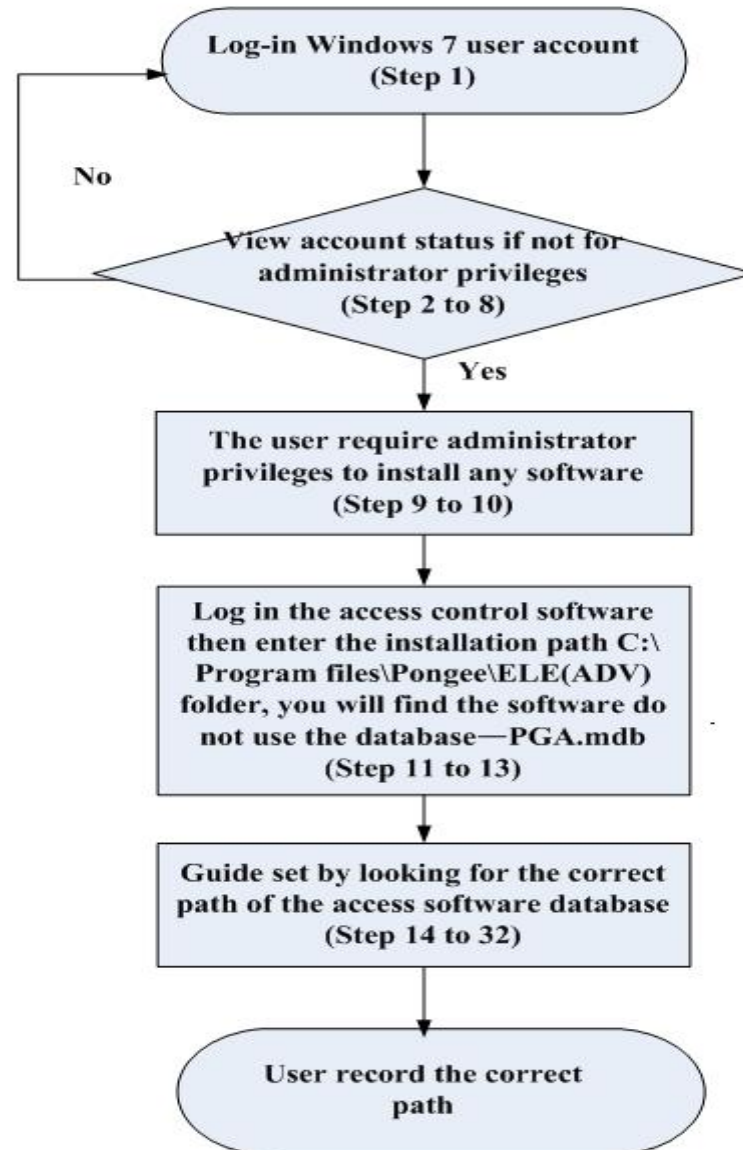
How to find out the path of database
under the Windows 7 operating system
that allows operation by user account



Pongee Industries Co., Ltd.

Copyright ©Pongee Industries Co., Ltd.

FAQ: How to find out the path of database under the Windows 7 operating system that allows operation by user account



FAQ: How to find out the path of database under the Windows 7 operating system that allows operation by user account

For example:

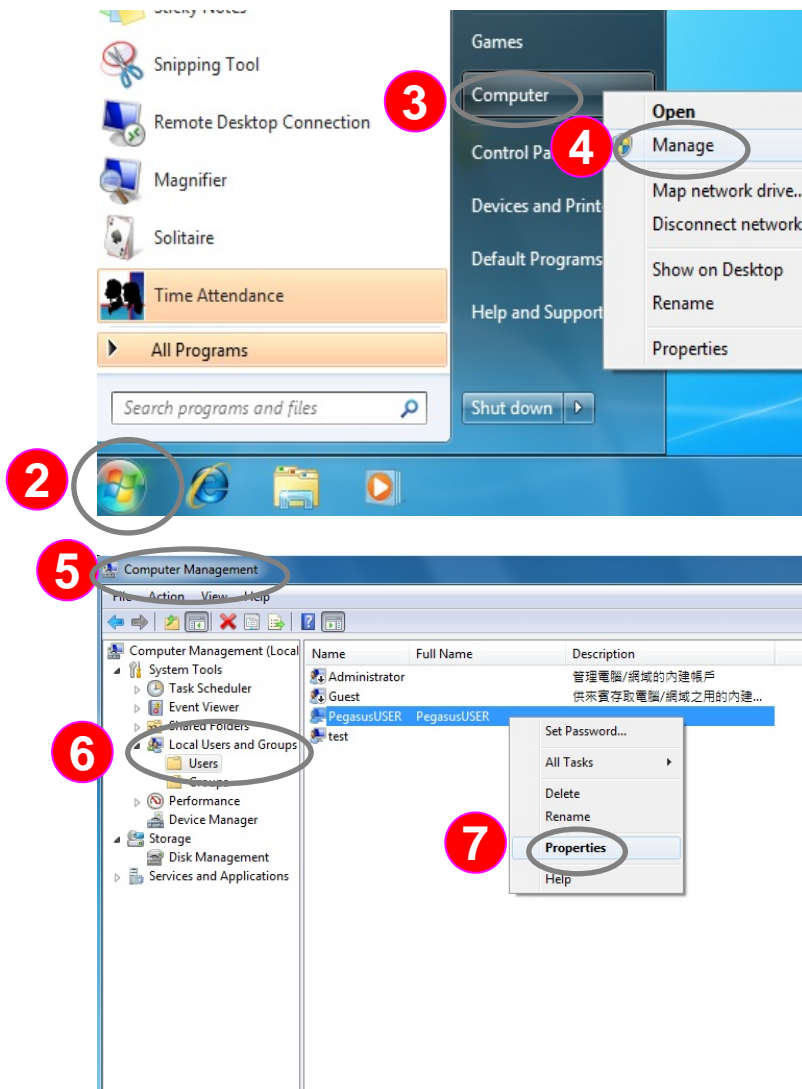
Under the Windows 7 operating system, the database of access control software would be move to the folder of user instead of normal installation path-C:\Program files \ Pongee \ ADV by operating system automatically when the access control software to be installed in a non-administrator account. Please refer to the following guide to find out correct path of database.




Instructions: log in Windows 7 with user account (example: Pegasus USER)

1 :Boot PC and log in as Pegasus USER to the desktop

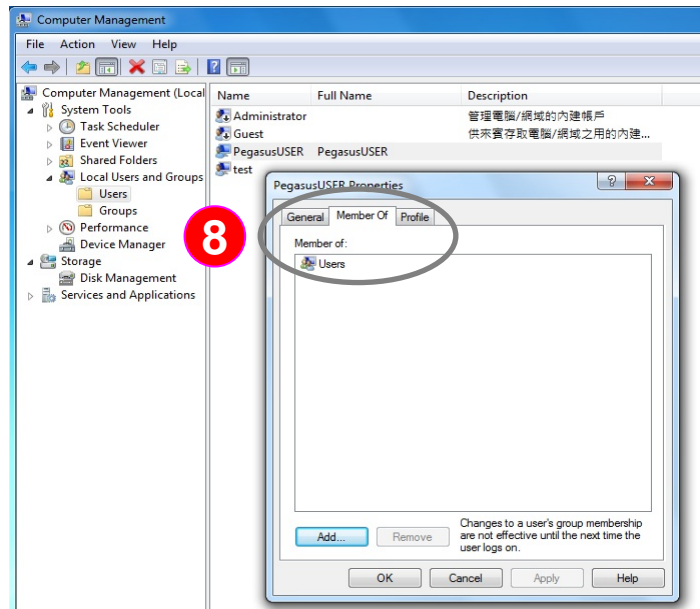
FAQ: How to find out the path of database under the Windows 7 operating system that allows operation by user account



Check the limits of authority of Pegasus USER and find out it's non-administrator

- 2** : Click the lower left "  " icon
- 3** : Click "Computer"
- 4** : Click "Manage"
- 5** : You would enter the "Computer Management" function menu
- 6** : Double-click "Local Users and Groups" and then select "Users"
- 7** : You would see all users of this computer. Right-click the "Pegasus USER" and then select "Properties"

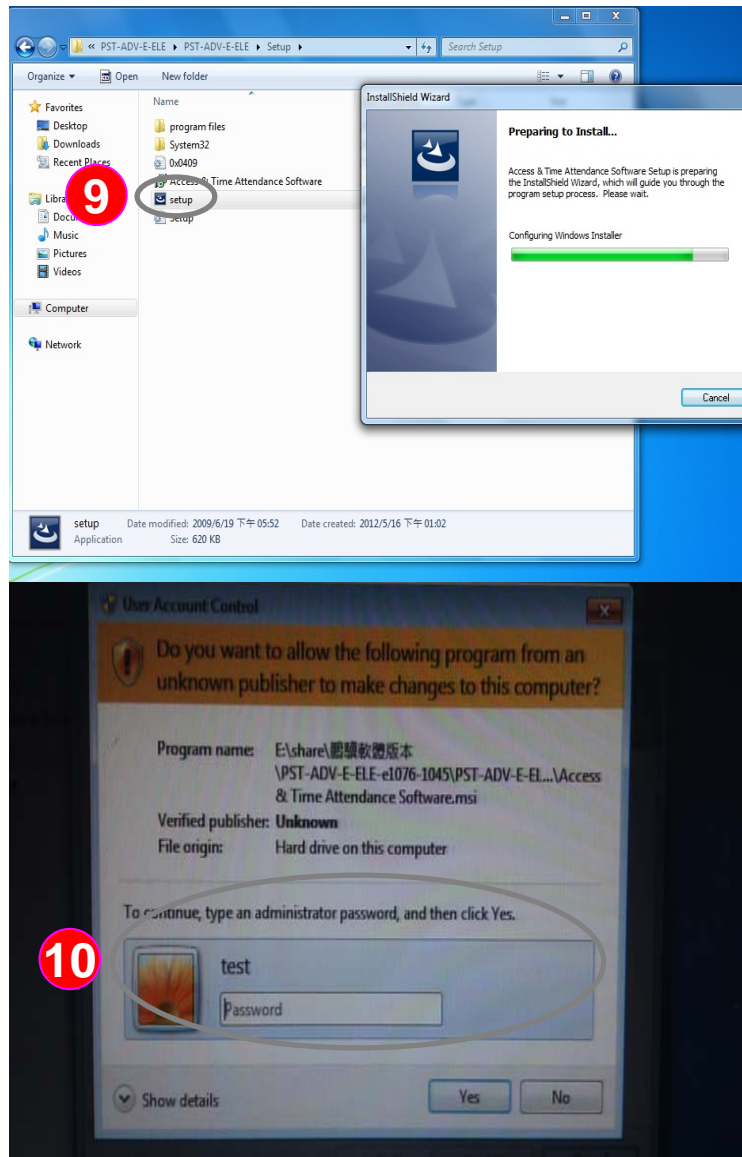
FAQ: How to find out the path of database under the Windows 7 operating system that allows operation by user account



8 : Click "Member Of" to see this account is Users ,not administrator



FAQ: How to find out the path of database under the Windows 7 operating system that allows operation by user account

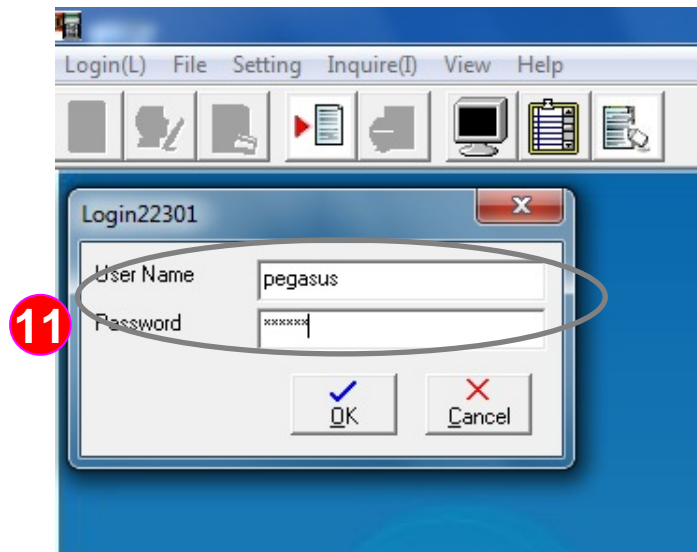


Instructions: The user would be requested with authority of administrator to install any software

9 : Double-click "setup" to start the installation of access control software

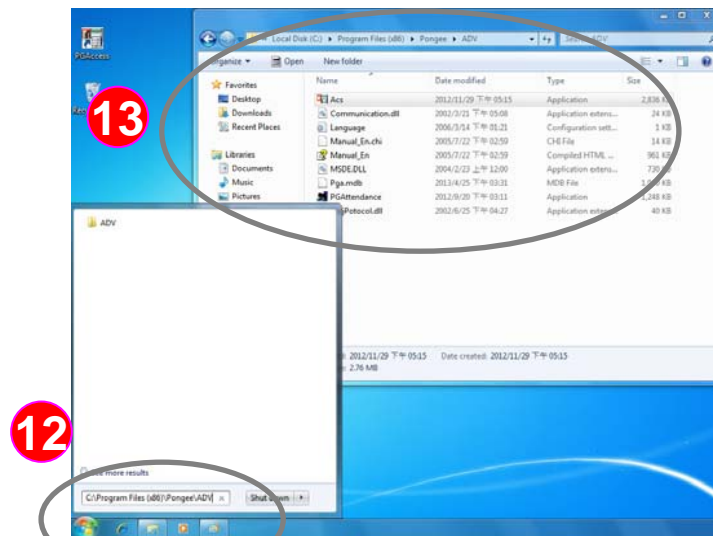
10 : The User Account Control screen would appear and requests to type an administrator password. Please type the password and click "Yes" to continue

FAQ: How to find out the path of database under the Windows 7 operating system that allows operation by user account



Instructions: Log in the access control software and then enter the installed path C:\Program files\Pongee\ADV folder, you would find out the software doesn't use the database-PGA.mdb

11 : Please log in to the access control software with administrator account
Account name: pegasus
Password: pongee

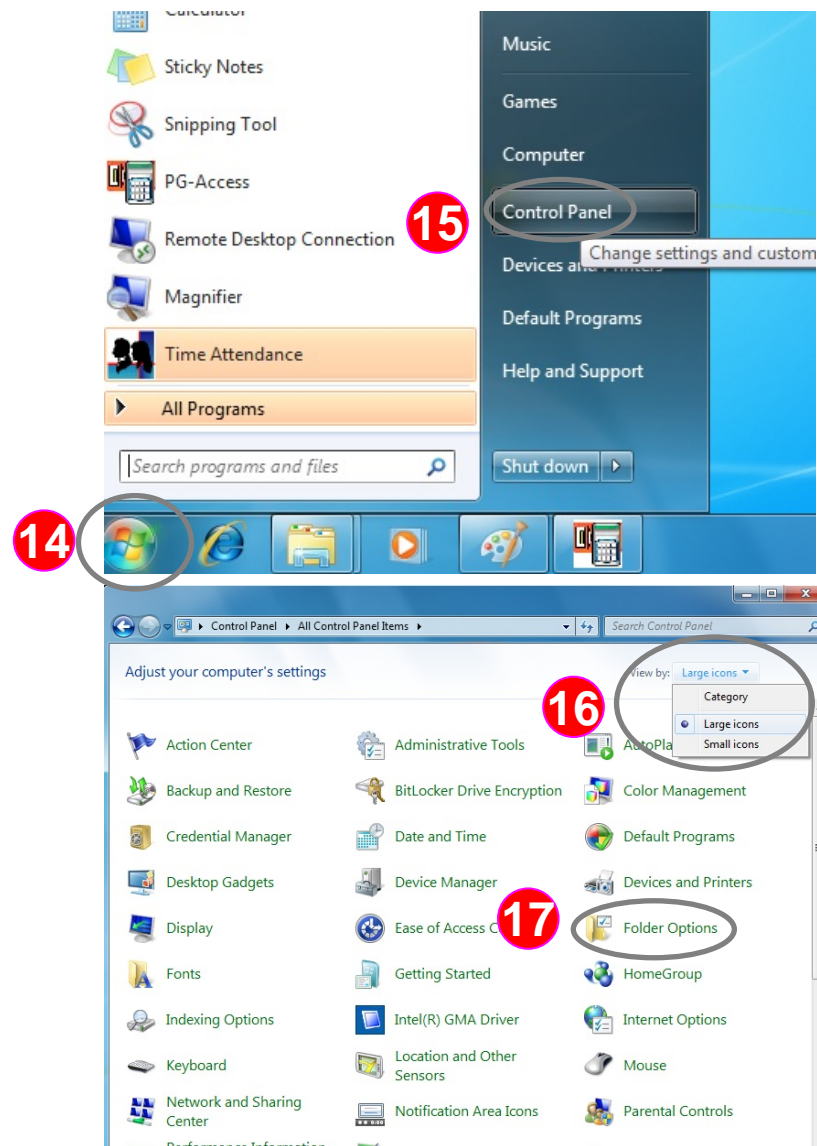


12 : After logged in to the access control software, please click the lower-left " " icon from desktop and key in "C: \Program files\Pongee\ADV " for checking the folder


13 : In this folder, there's only the database "PGA.mdb" but no relative record-locking file "PGA.ldb" created. That proves the access control software doesn't use database of PGA.ldb

*Note: If your operating system is 64-bit, please enter
C:\Programfiles(x86)\Pongee\ADV folder to check

FAQ: How to find out the path of database under the Windows 7 operating system that allows operation by user account



Instructions: Guide to find out the correct path of the access software database

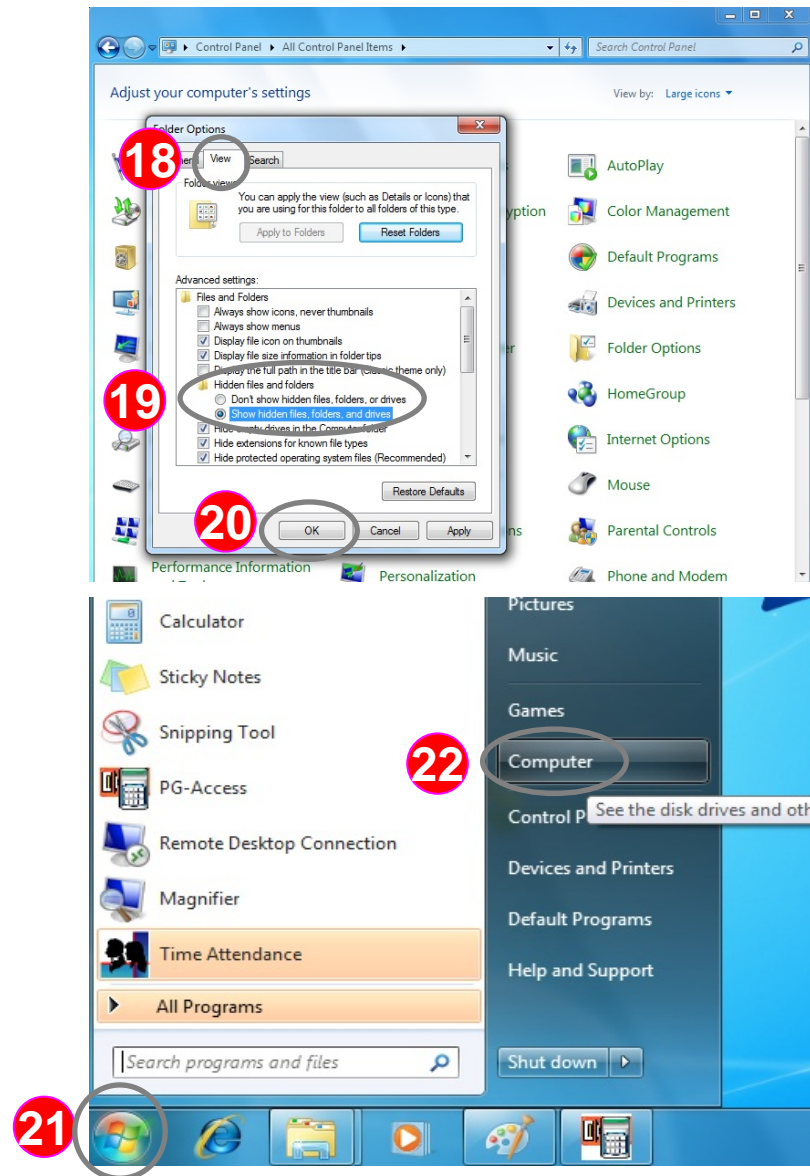
14 : Click the lower-left “” icon from desktop

15 : Click "Control Panel"

16 : Select "Large icons" from "View by" selection

17 : Click "Folder Options"

FAQ: How to find out the path of database under the Windows 7 operating system that allows operation by user account



Instructions: Guide to find out the correct path of the access software database

18 : Click "View"

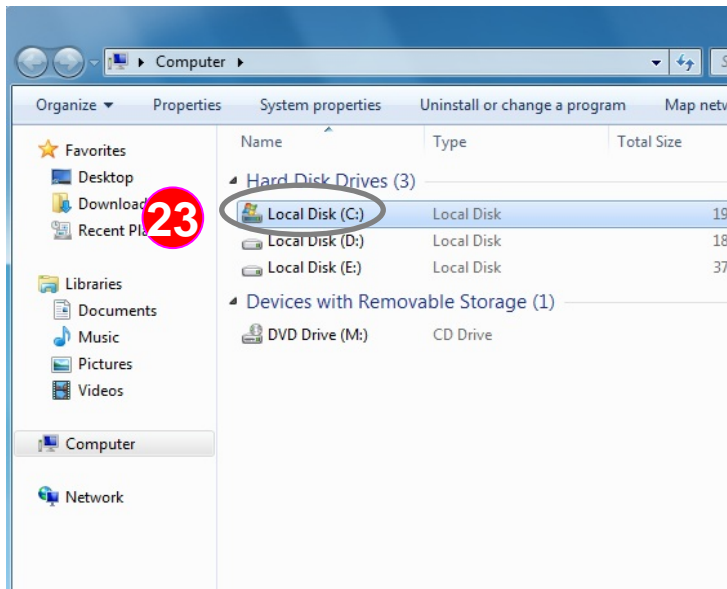
19 : From the "Advanced setting:", please tick "Show hidden files, folders and drives" under the "Hidden files and folders"

20 : Click "OK" to save the setting

21 : Click the lower-left "Windows logo" icon from desktop

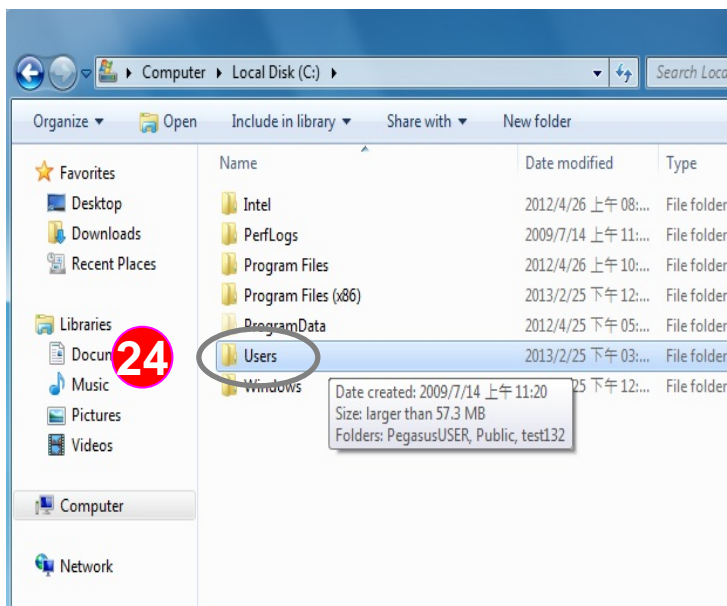
22 : Click "Computer"

FAQ: How to find out the path of database under the Windows 7 operating system that allows operation by user account

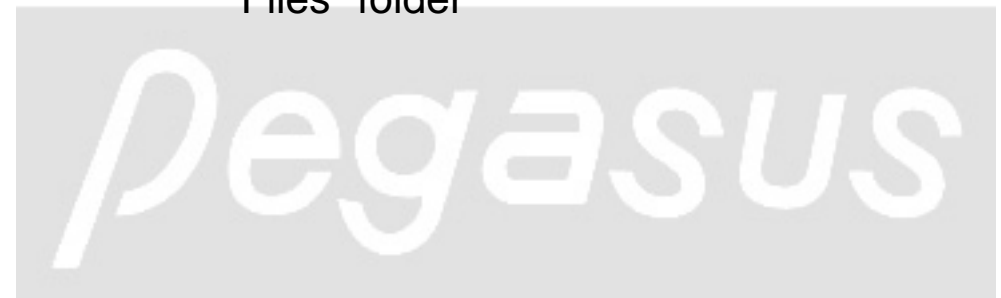


Instructions: Guide to find out the correct path of the access software database

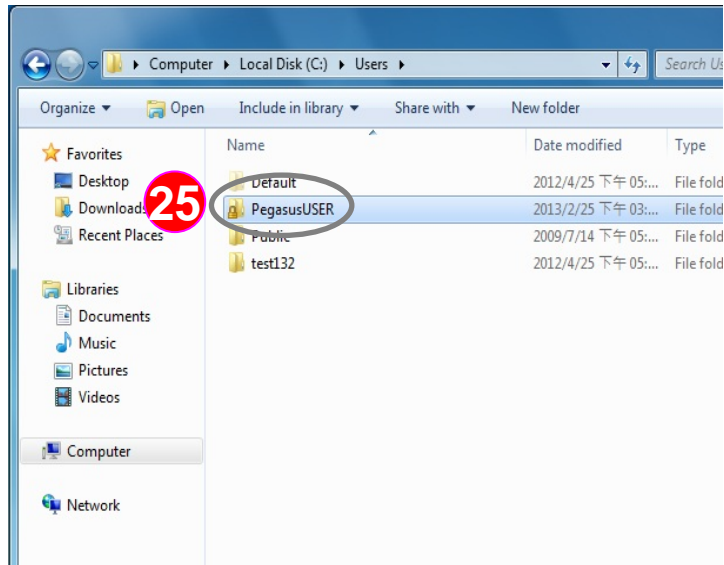
23 : Please enter " Local Disk(C:)" folder.



24 : Please enter " Users " folder, rather than into "Program Files" folder

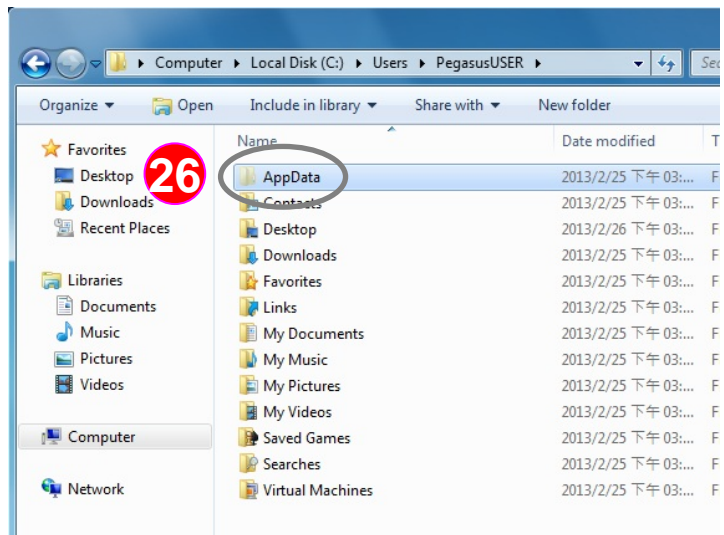


FAQ: How to find out the path of database under the Windows 7 operating system that allows operation by user account



Instructions: Guide to find out the correct path of the access software database

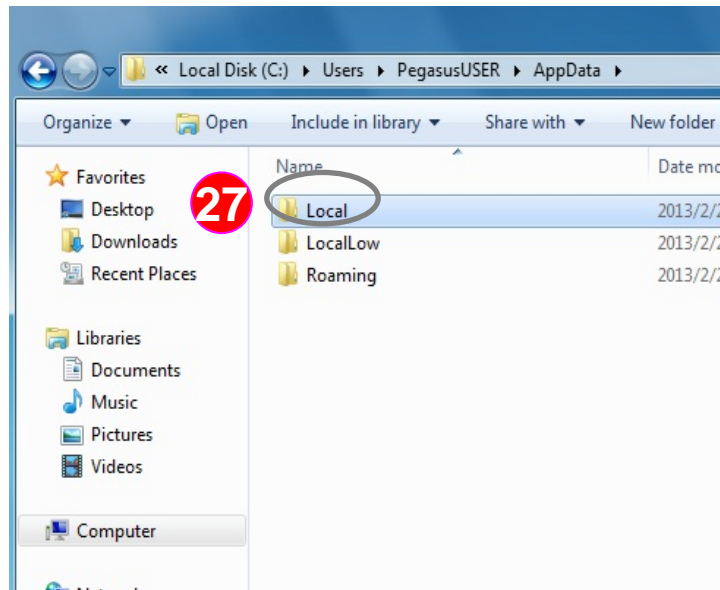
25 : Please enter " PegasusUSER" folder.



26 : Please enter "AppData" folder which is a hidden folder

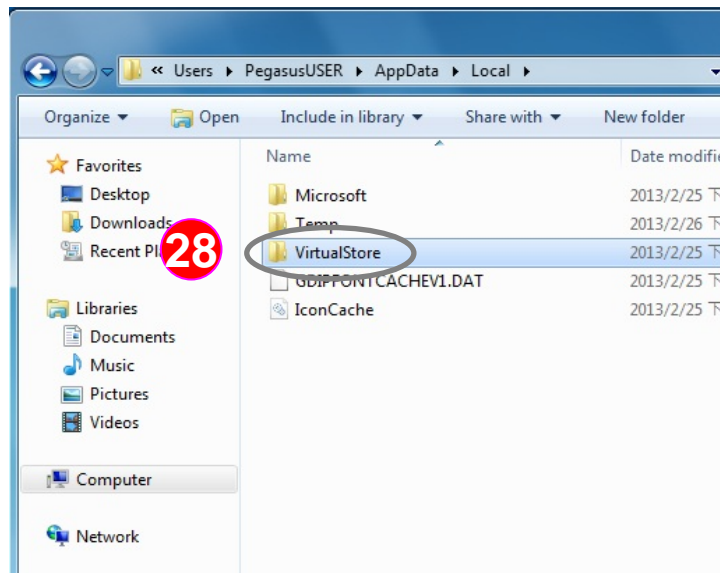
*Note: If you didn't follow steps **16** to **19** , you would not find the "AppData" folder

FAQ: How to find out the path of database under the Windows 7 operating system that allows operation by user account



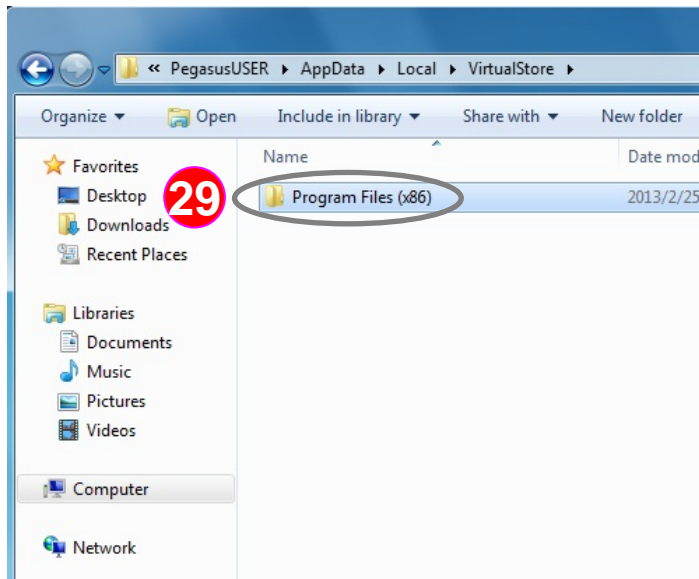
Instructions: Guide to find out the correct path of the access software database

27 : Please enter " Local " folder.



28 : Please enter " Virtual Store " folder.

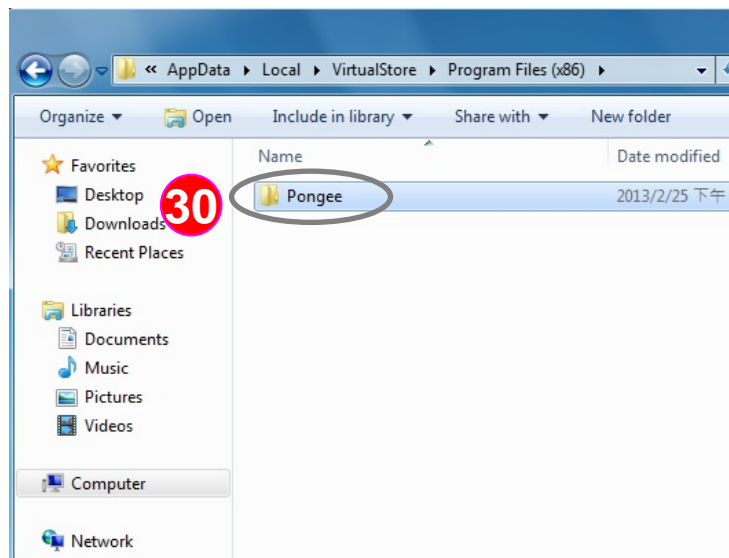
FAQ: How to find out the path of database under the Windows 7 operating system that allows operation by user account



Instructions: Guide to find out the correct path of the access software database

29 : You would find the folder "Program files" which is the same one from previous installation path

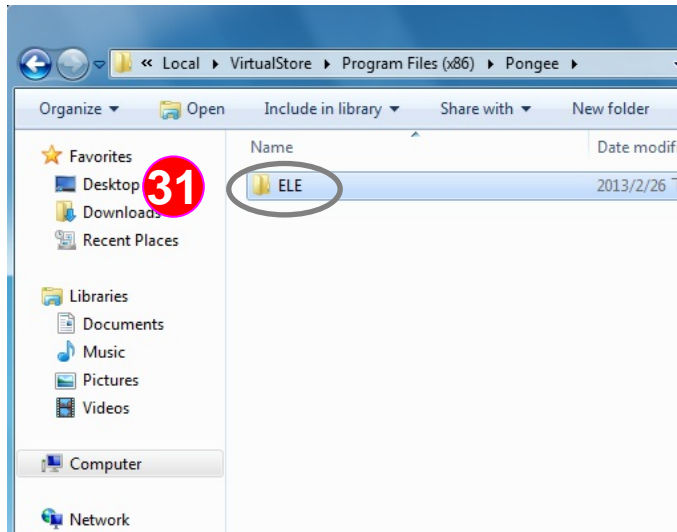
* Note: If your operating system is 64-bit, you would find the folder name as "Program Files (x86)"



30 : Please enter " Pongee " folder.



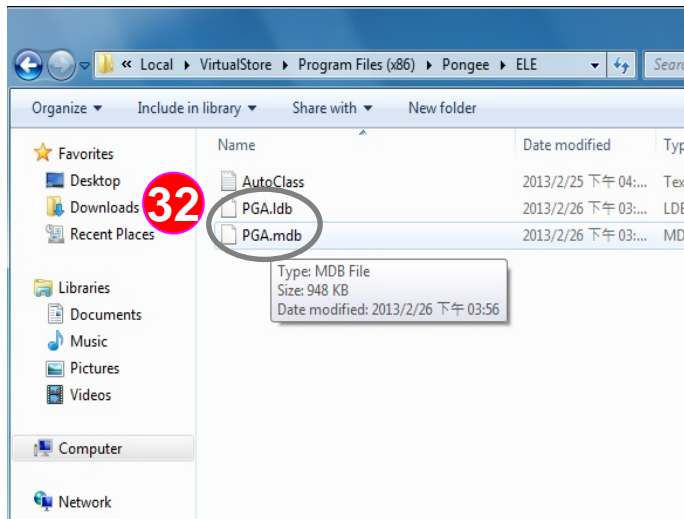
FAQ: How to find out the path of database under the Windows 7 operating system that allows operation by user account



Instructions: Guide to find out the correct path of the access software database

31 : Please enter " ELE " folder.

32 : You would find out the database PGA.mdb is using (meanwhile, you would also find the record-locking file PGA.ldb created in the same folder)



Conclusion: as long as you log in Windows 7 with non-administrator account, the operating system would move any updated data of software to the specific folder of non-administrator account. This is the feature of Windows 7 different to Windows XP, please be noted.