



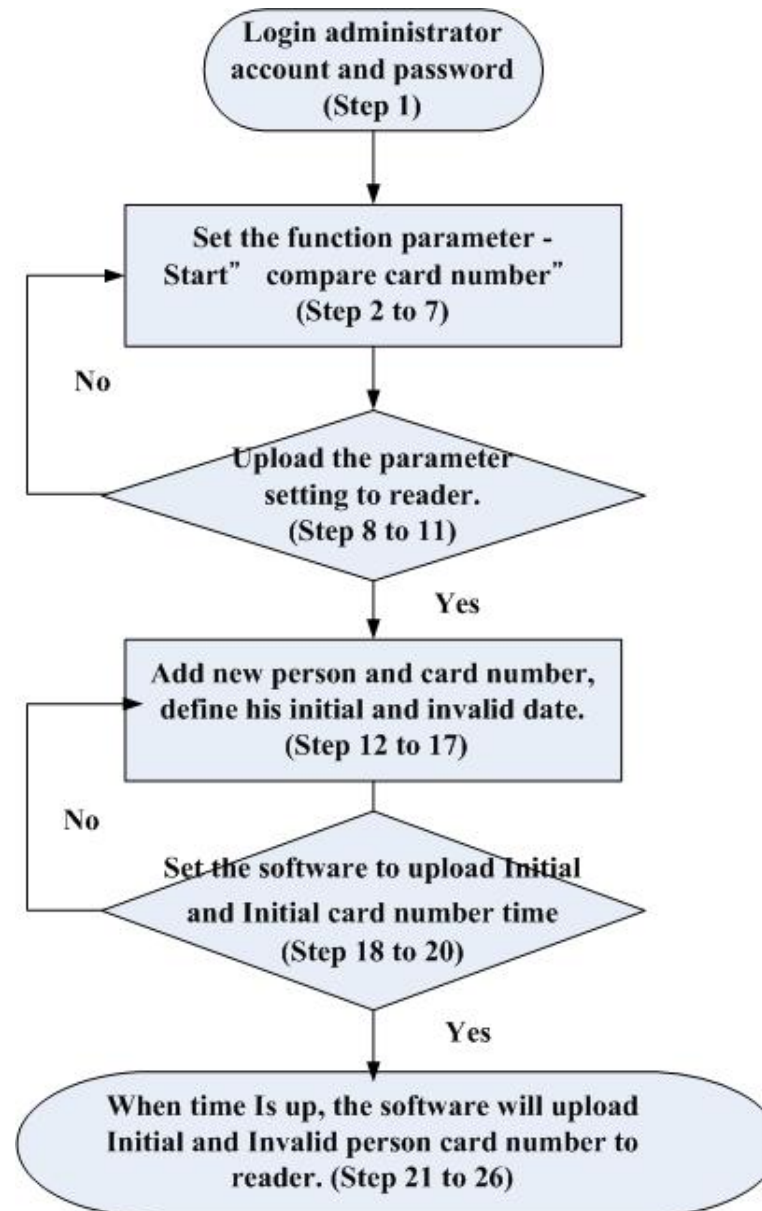
How to enable compare personal initial and invalid date function

(suitable for software :PST-ADV-E-WEB series)



Copyright ©Pongee Industries Co., Ltd.

FAQ: How to enable compare personal initial and invalid date function



FAQ: How to enable compare personal initial and invalid date function



For example :

You can set the valid/invalid date of card number by software and can designated to upload the time of valid/invalid date. When the time is up, it can upload valid or invalid date to reader at the same time, so you can set valid and invalid card to achieve the access control by administrator.

Instructions: Login administrator account and password

1 : Please log in to the administrator account system first

Account name: pegasus
Password: pongee

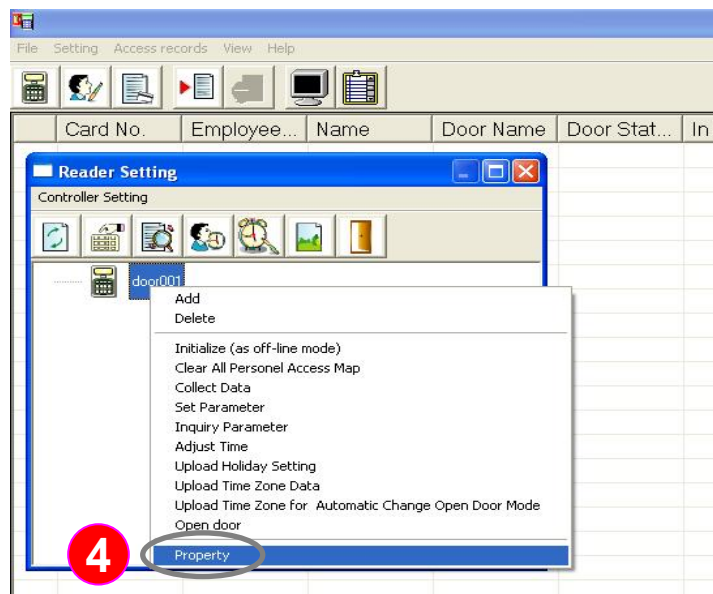
2 : Click the menu "Setting (S)" and show drop-down screen window then click "Reader Setting"(as left showed)

FAQ: How to enable compare personal initial and invalid date function



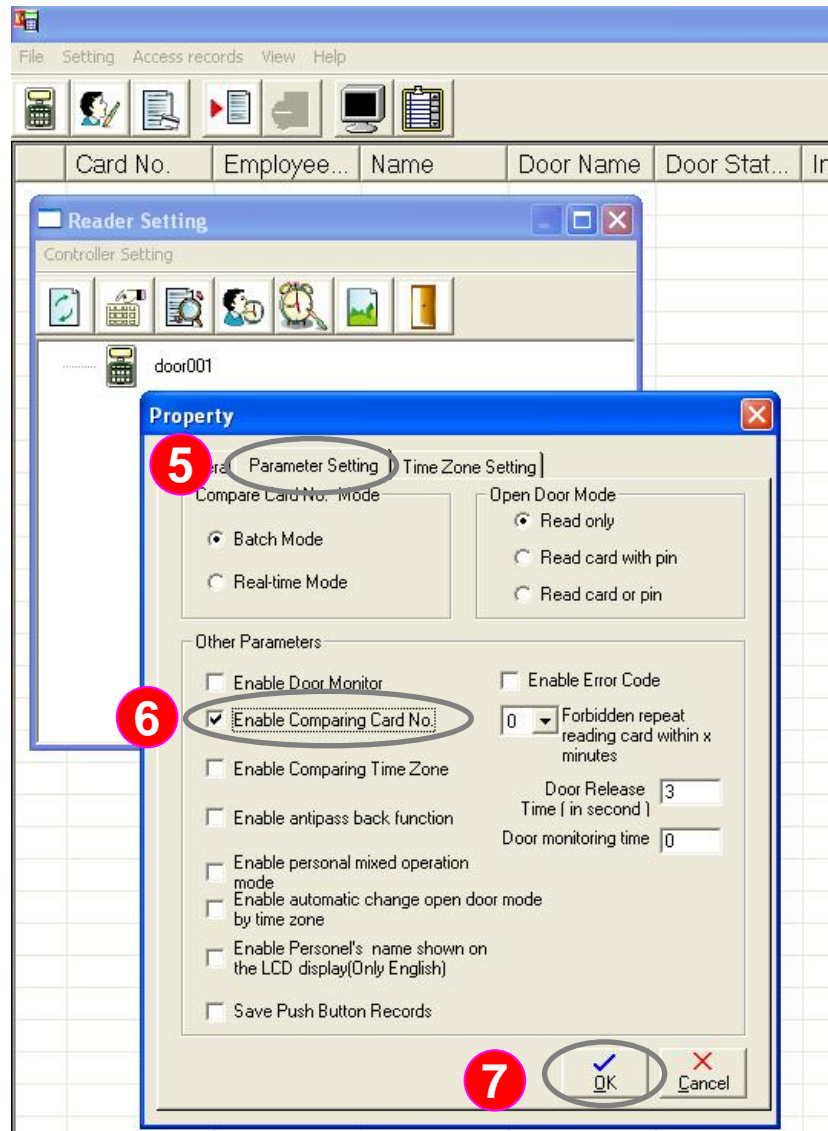
Instructions: Set card reader parameter - enable comparing card number

3 : Left button of mouse and click the reader (ex: door 001)(marked as selected).



4 :Then click right button of mouse, the system will drop-down function menus and click the mouse to property by left button of mouse.

FAQ: How to enable compare personal initial and invalid date function



Instructions: Set card reader parameter - enable comparing card number

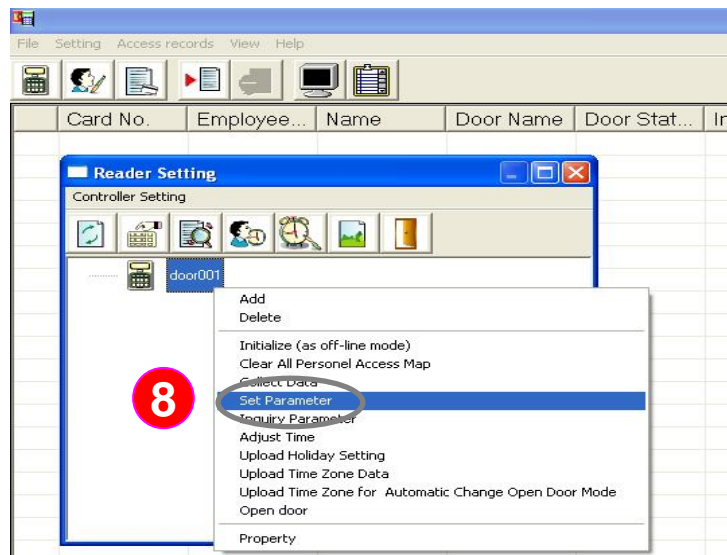
5 : Select "Parameter Setting " tab, the system will switch to the corresponding setting of screen automatically

6 : Please (v) "Enable Comparing Card No."function to make card reader comparing success.

7 : Press " OK " to save the setting

pegasus

FAQ: How to enable compare personal initial and invalid date function

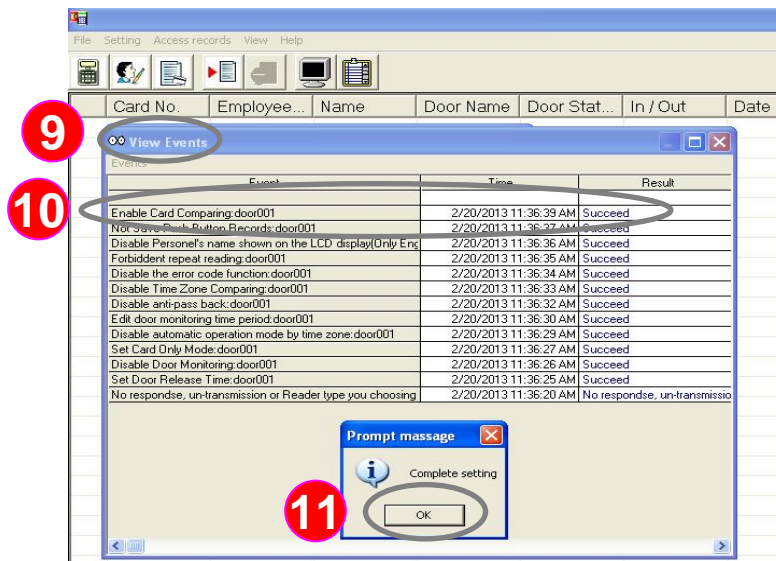


Instructions: Upload the function parameters just set to the card reader

8 :Click "door 001" (marked blue as selected) then select "set parameter".

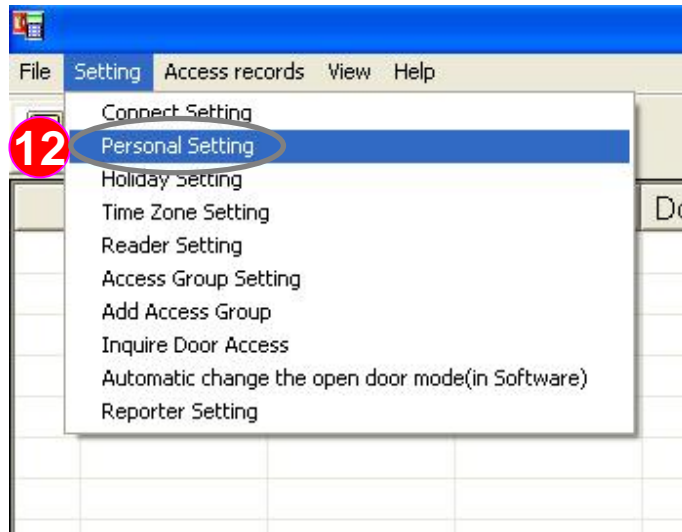
9 : the system will show the events window.

10 :Please confirm " Enable Card comparing " function if it is succeed

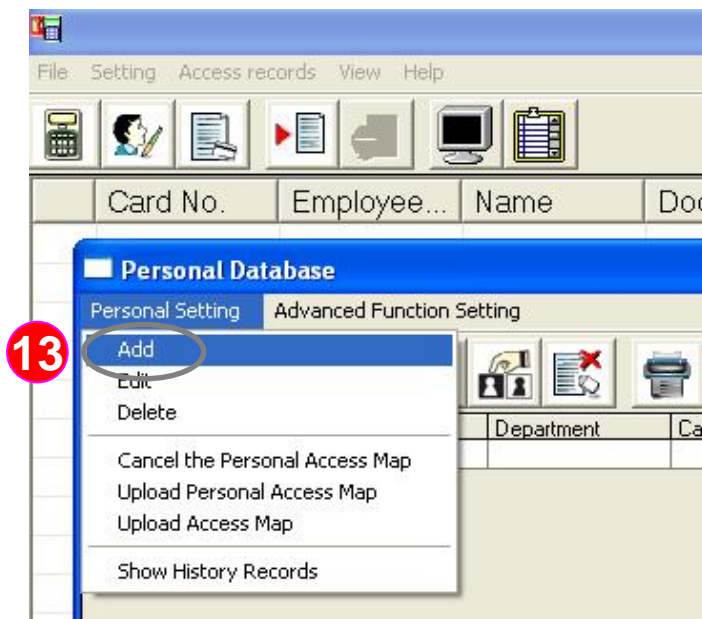


11 : Finally, click "OK" button to end.

FAQ: How to enable compare personal initial and invalid date function



Instructions: For example, the new name of personnal " Pegasus01 " and card number " 01254202 ", defined his initial date of February 18, and invalid date is 19 February (if any other items request as well)



12 : Click the function menu "Setting (S)" and Drop-down screen window then click the " Personal Setting " (such as shown on the left)

13 : Click the " Personal Setting " and Drop-down screen window then click the " Add " (such as shown on the left)

FAQ: How to enable compare personal initial and invalid date function

The screenshot shows a 'Personal Map Setup' dialog box with the following fields and callouts:


- 14**: Name: Pegasus01
- 15**: Card No.: 01254202
- 16**: Initial Date: 2 / 18 / 2013 and Invalid Date: 2 / 19 / 2013
- 17**: OK button

Other fields visible include Employee ID, Department, Password, Access Group Setting (TG1), and Card Issued (2 / 1 / 2013). There is also a Photo placeholder on the left.

Instructions: This example, the new name of the person " Pegasus01 " and card No. " 01254202 ", defined his initial date of February 18, with an invalid date of 19 February (if any other items request as well)

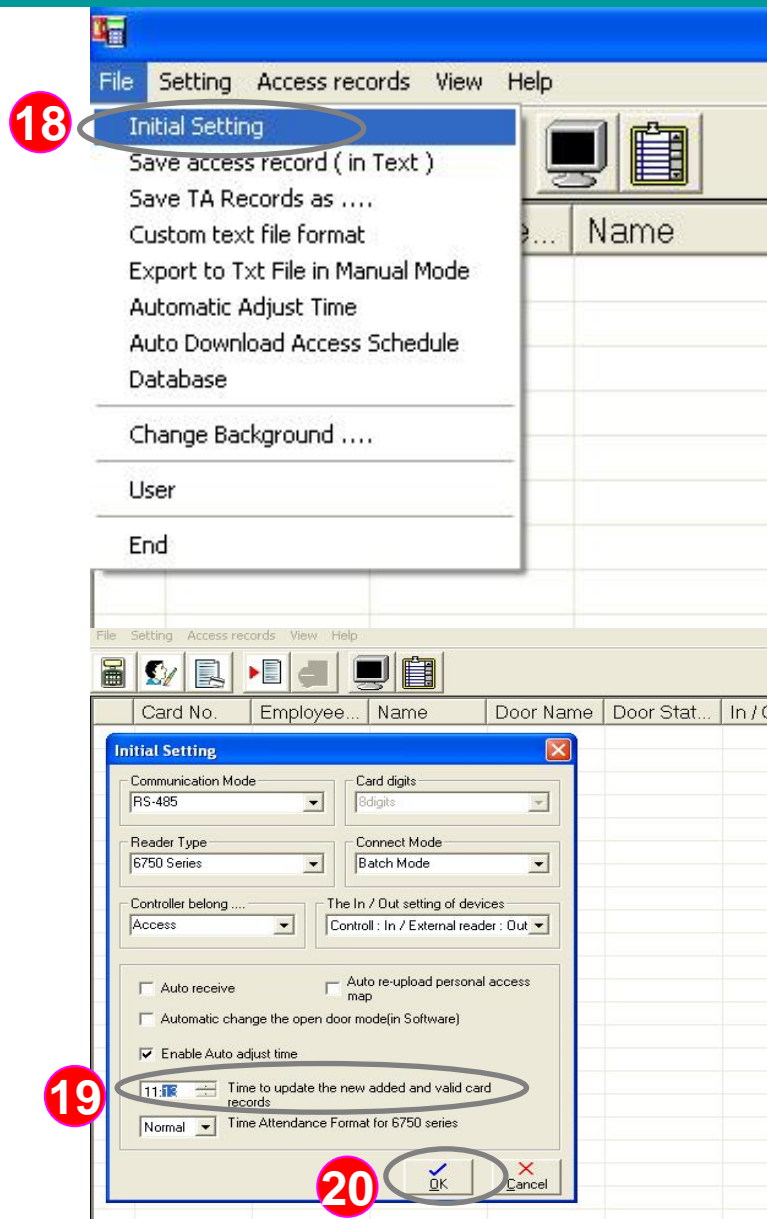
14 : Fill out the " Name ", enter " Pegasus01 "

15 : In the "Card No." items and enter "01254202"

16 : Press "  " to fill out initial date "2013/2/18 " and invalid date "2013/2/19 " respectively.

17 : Finally, click "OK" button to end

FAQ: How to enable compare personal initial and invalid date function



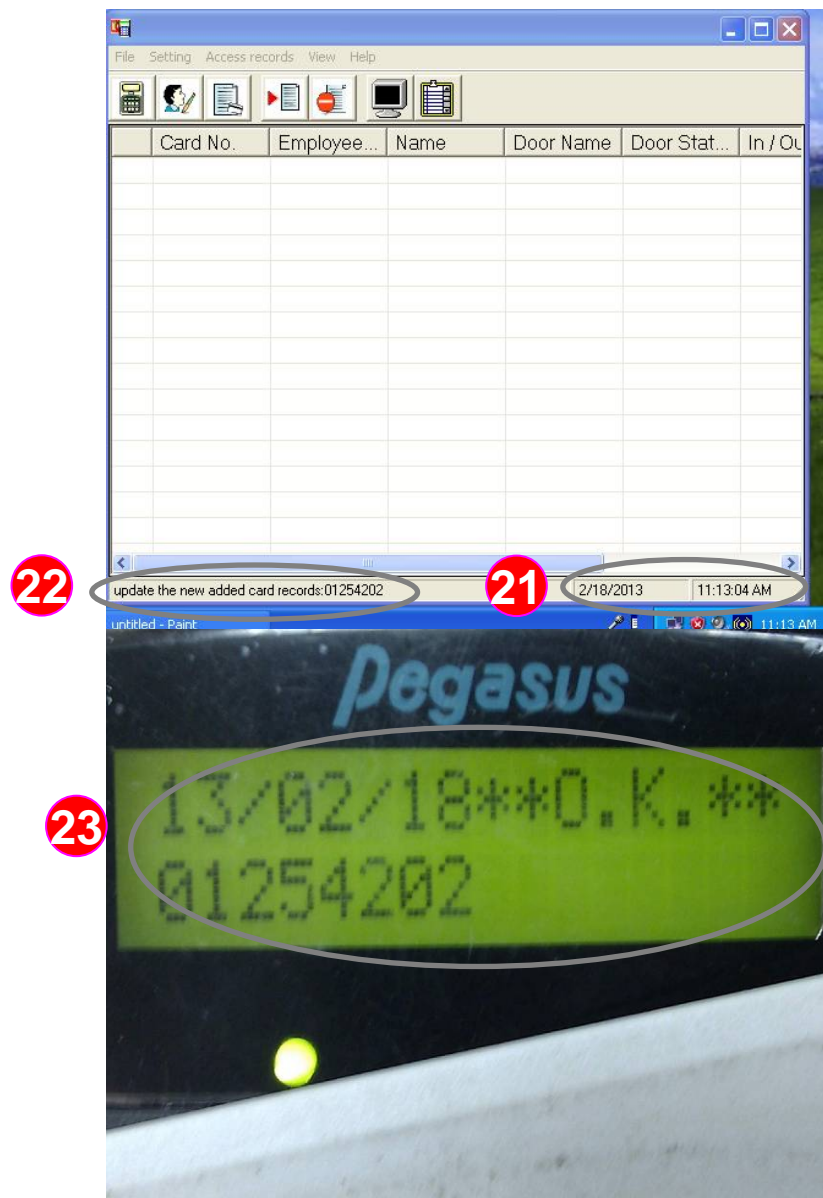
Instructions: set th software to upload initial time and invalid card number time.

18 : Click the function menu " File" and Drop-down screen window then click the " Initial Setting " (such as shown on the left)

19 : At this time there are " Initial Setting " window, please select " Time to update the new added and valid card records " , this example, select the " 11:13" (Note: The setting of the time required only when the software is opened)

20 : Finally, click "OK" button to end

FAQ: How to enable compare personal initial and invalid date function



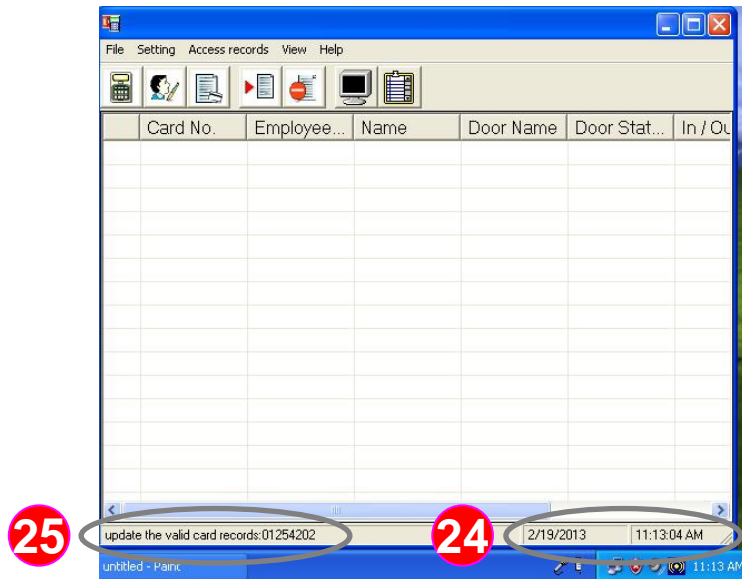
Instructions: When designated time is up, the software will upload initial and invalid personnel card number to the card reader automatically.

21 : Computer date is " 2013/02/18 ", the time go to the time of upload the new initial and valid card number time "11:13 "

22 : The software will upload invalid card number " 01254202 " to reader.

23 : Present the card " 01254202 " and pass " O.K. "

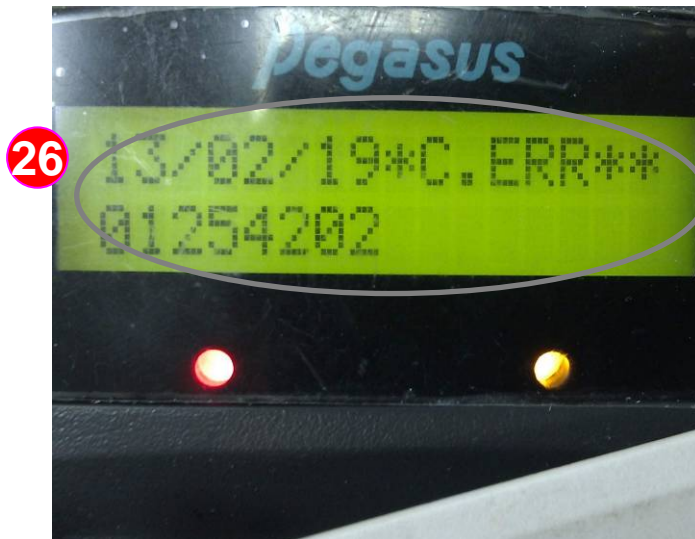
FAQ: How to enable compare personal initial and invalid date function



Instructions:When desinated time is up, the software will upload initial and invalid personnel card number to the card reader automatically.

24 : Computer date is " 2013/02/19 ", the system will upload initial and invalid card number time " 11:13 "

25 : The software will upload the invalid card numbers " 01254202 " to reader.



26 : When you present the card, the card number " C.ERR " can't pass.