



# ESD personnel anti-static detection and access control system



**ESD testing controller with 7" LCD & relay board**  
PP-6806/ESD



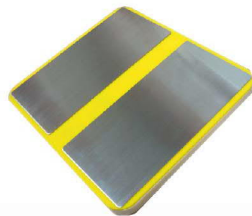
**ESD tester**  
PE168-STG-2



**RFID reader**  
PUA-310V1 Series



**Anti static wrist strap**  
PK-62511-R



**Static testing paddle**  
PE168-STC/T-1



**Wall mounting box**  
PE168-BOX-1

## Introduction

This system is the detection management of personnel enters EPA (ESD protected area). The system combined with identification, electrostatic testing base on classified authority, ESD test records, report management and electric locks or access gates.

### PP-6806/ESD

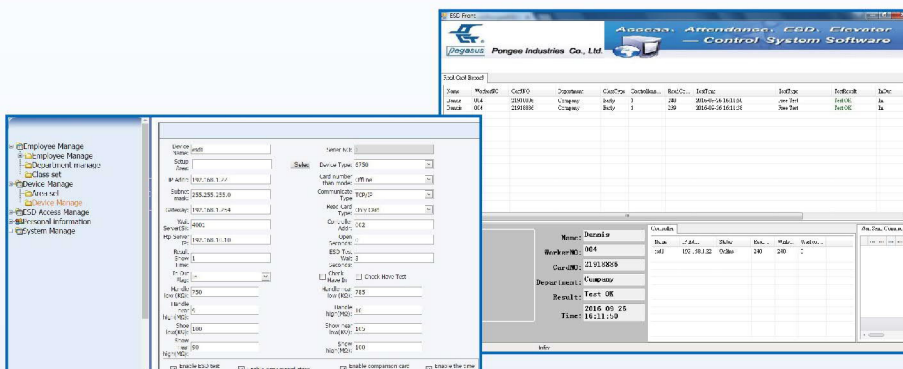
ESD testing controller with 7" LCD & relay board.

### PE168-STG-2

ESD tester supports to check personnel grounding of either wrist straps or footwear. The standard resistance and near failure resistance can be set from the color screen login. You also can connect to ESD controller and then set by the ESD management software.

### PUA-310V1 series

RFID reader applicable with EM (125KHz ASK), H.C. (125KHz FSK), Mifare cards etc.



- The ESD testing controller is designed with 7" LCD to display operating guide, name, department, card number, ID, date, time, communicating status, set high/low-end resistance and detected resistance.
- Depends on different personnel, the system can be configured with classified authority. (exempted, wrist band, conductive/anti-static shoes or comprehensive test)
- Supports various identification such as RF card, fingerprint, face, palm vein, iris and barcode etc.
- Standalone mode supports maximum 50000 users recognition and event recording.
- Built-in TCP/IP convenient software management.
- The ESD tester only detect once legal card presented to prevent any random operation, and the detection finish in 3 seconds.
- Supplies alarm output once illegal card presented or continuous test fail via I/O relay output.
- Web-based management software and SQL database.
- The management software supports variety of reports (sort by month, date, department, personal or all kinds of error) automatically or manually to specific e-mail address.
- Anti-pass-back control.
- Supports Short-term immunity function. For shorten detection time to access, the system can be set for identification only without ESD test within a few hours after first detection passed.

Mifare is a registered trademark of NXP B.V.



Pillar type of testing terminal



Bridge type of turnstile gate



Bridge type of flap barrier with bevel panel



Bridge type of flap barrier with vertical panel

## PONGEE INDUSTRIES CO., LTD.

5F., No.738, Chung-Cheng Rd., Chung-Ho District, New Taipei City 23511, Taiwan

Tel : 886-2-82280198

Fax : 886-2-82280191

E-mail : [pongee@pongee.com.tw](mailto:pongee@pongee.com.tw)

Website:<http://www.pongee.com>

We reserve the right to change the specification without prior notice or obligation!

