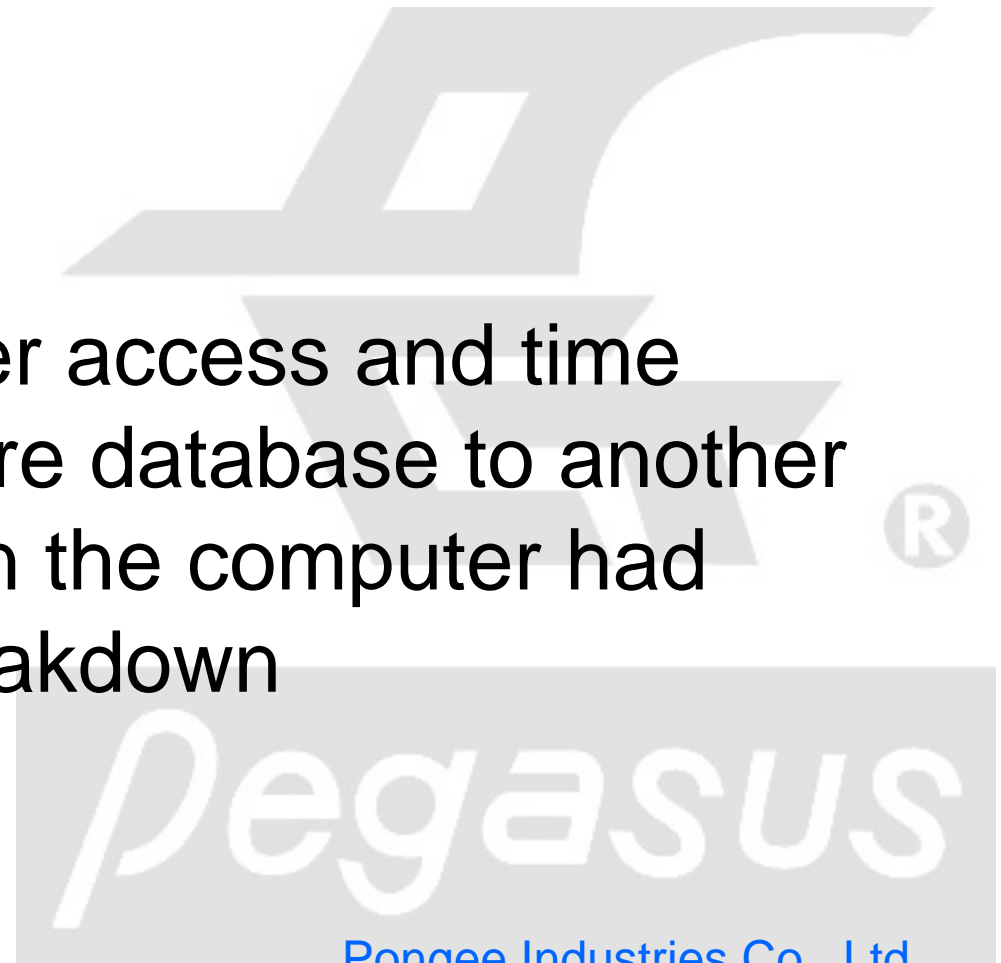


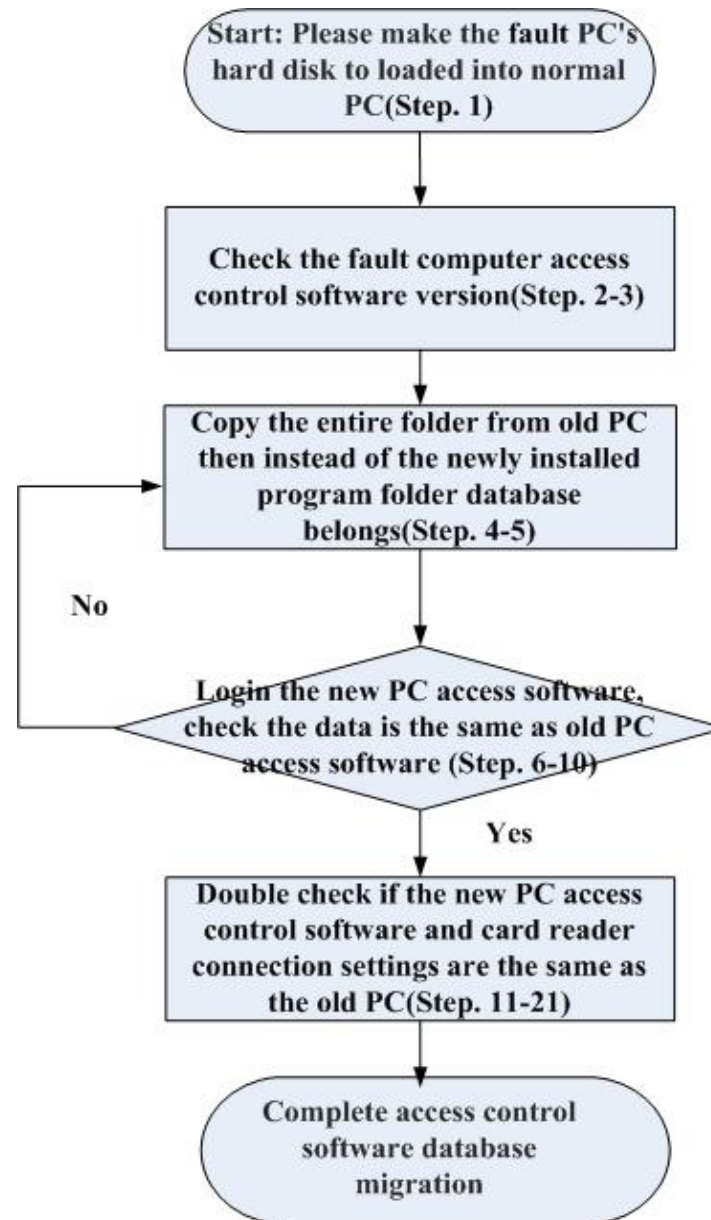


How to transfer access and time attendance software database to another computer when the computer had breakdown

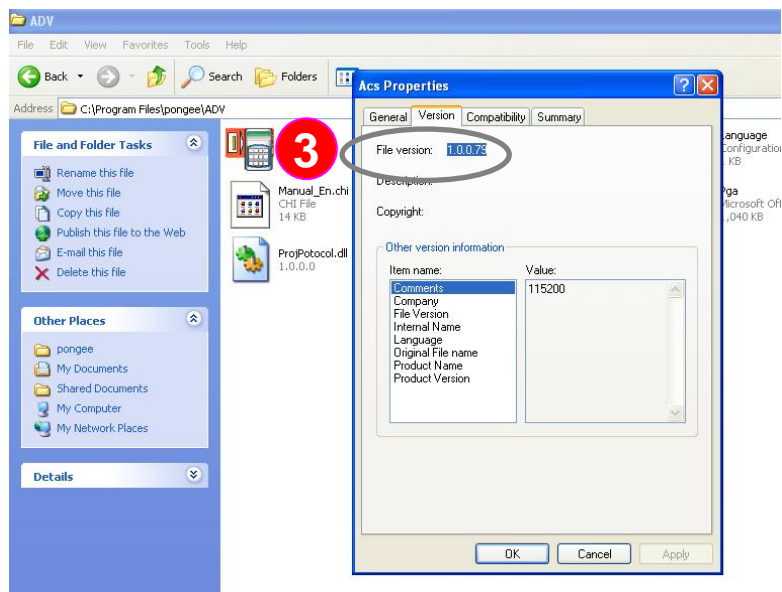
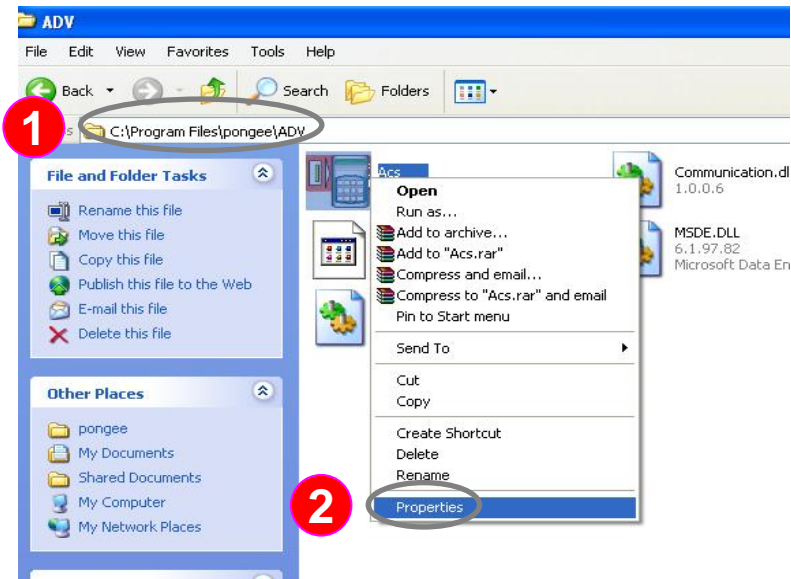


Pongee Industries Co., Ltd.

Copyright ©Pongee Industries Co., Ltd.




# FAQ: How to transfer access and time attendance software database to another computer when the computer had breakdown



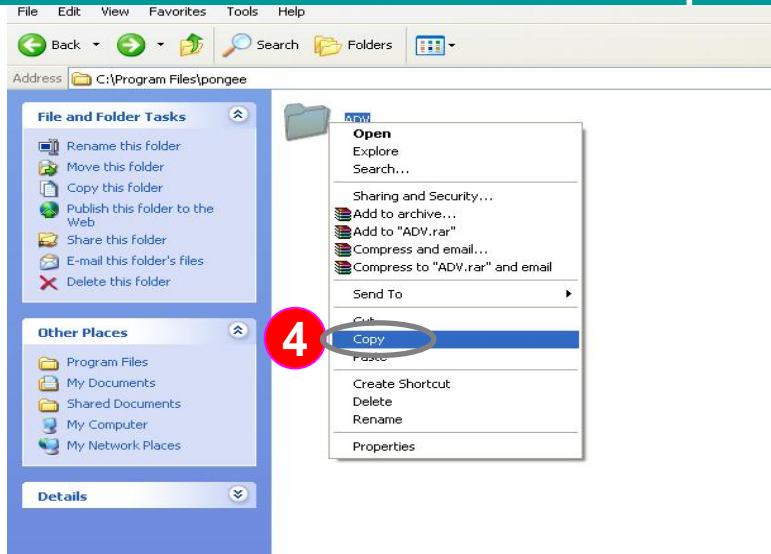
## Case study:

This FAQ will explain how to transfer Pegasus access control software database to another computer while computer is breakdown suddenly.

## Step: 1. Check current access control software version

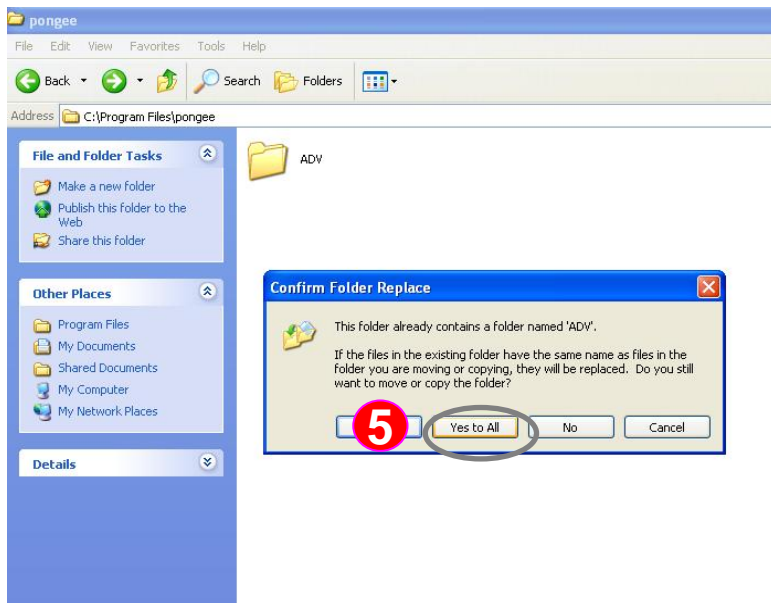
- 1 :Please took out hard disk from PC and loaded into new PC with original software installation path C:\Program files\Pongee\ of ELE (or ADV) folder
  - 2 :Click on the access software main program "  " and Right-click the mouse button to select " Properties " (shown at top left)
  - 3 :Select "Version" to find the 4-digit version and Please confirm weather the version is same as the installation CD on hand.
- \* Note: If the version is not the same, please contact Pegasus to confirm the compatibility

# FAQ: How to transfer access and time attendance software database to another computer when the computer had breakdown



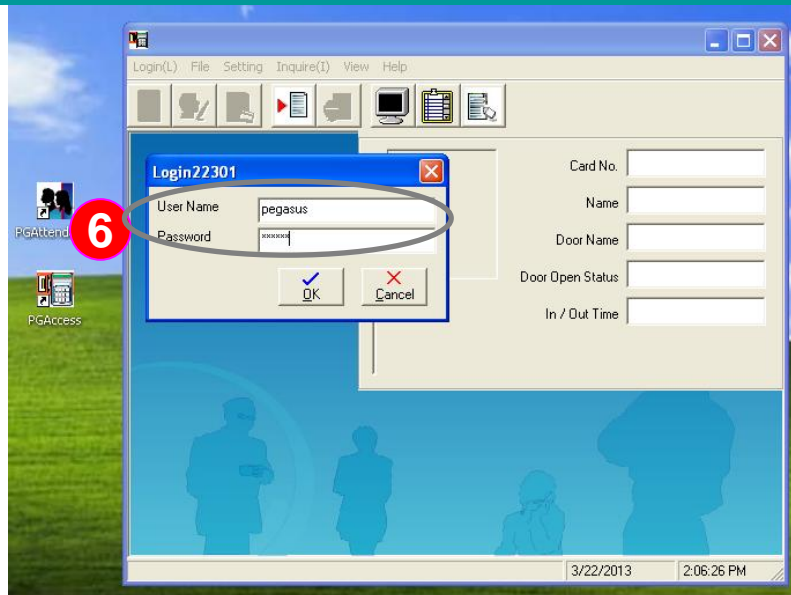
**Step 2. Copy the entire database of all folders, and replaced them to the new PC after installed the access controller software, and ensure that all the folders are replaced into correct software program path**

**4** :Copy the entire database of all folders



**5** :All the folders in the new computer will be replaced by the copied folders.

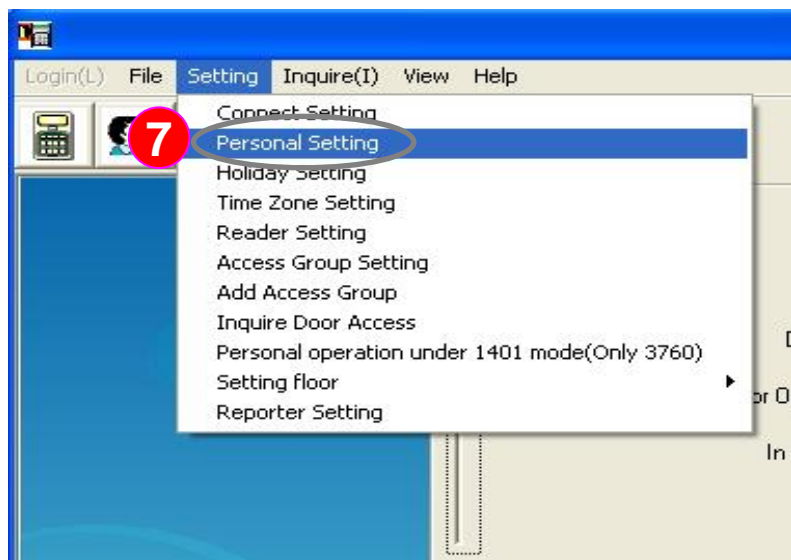
# FAQ: How to transfer access and time attendance software database to another computer when the computer had breakdown



**Step: 3. Login to the new PC access software, and check if the data is the same as the old PC access software**

**6** :Please login to the administrator account system

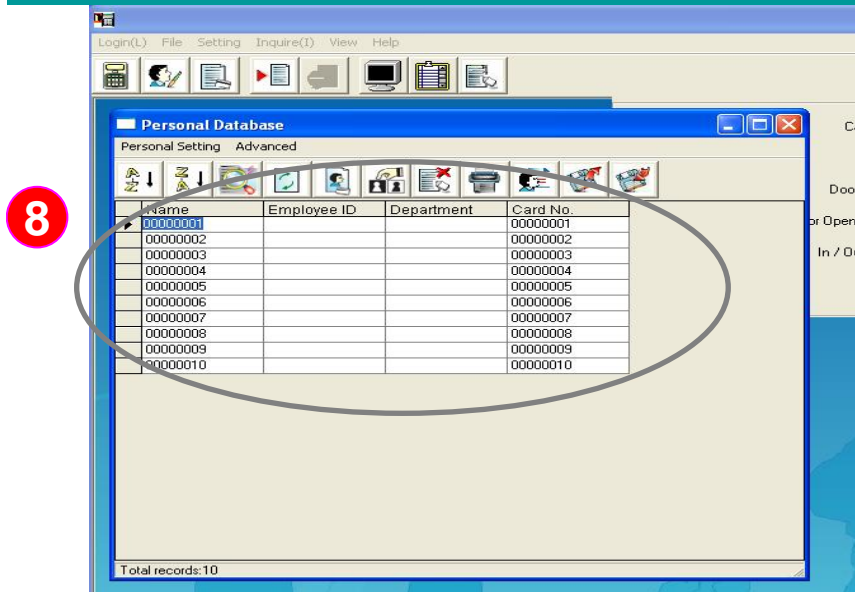
Account:pegasus  
Password:pongee



**7** :Click the function menu "Setting (S)" and drop-down display window, then click the " Personal Setting "



# FAQ: How to transfer access and time attendance software database to another computer when the computer had breakdown



**Step: 3. Login to the new PC access software, and check if the data is the same as the old PC access software**

8 :You should find the complete personal data



9 :Click the function menu "Inquire(I)" and drop-down display window, then click the " Show all "

# FAQ: How to transfer access and time attendance software database to another computer when the computer had breakdown

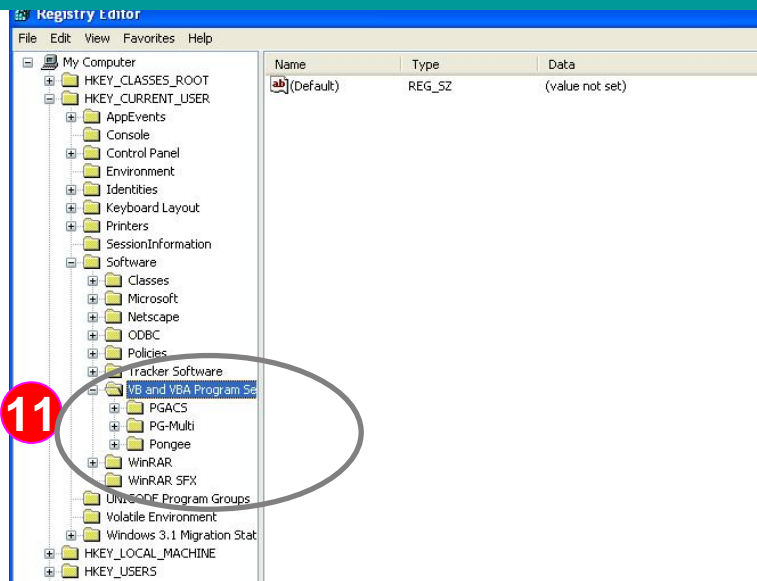
Name	Employee ID	Card No.	Date	Door Name	Open Door Status	In/Out
		08668282	3/19/2013 11:06:00 PM	Door001	Legal Access	in
		08668282	3/19/2013 11:06:00 PM	Door001	Legal Access	in
		06924412	3/20/2013 1:55:00 PM	Door001	Legal Access	in
		48012482	3/20/2013 1:55:00 PM	Door001	Legal Access	in
		79050685	3/20/2013 1:55:00 PM	Door001	Legal Access	in
		79050685	3/20/2013 1:55:00 PM	Door001	Legal Access	in
		79071309	3/20/2013 1:55:00 PM	Door001	Legal Access	in
		95263517	3/20/2013 1:55:00 PM	Door001	Legal Access	in
		95263517	3/20/2013 1:55:00 PM	Door001	Legal Access	in

**Step: 3. Login to the new PC access software, and check if the data is the same as the old PC access software**

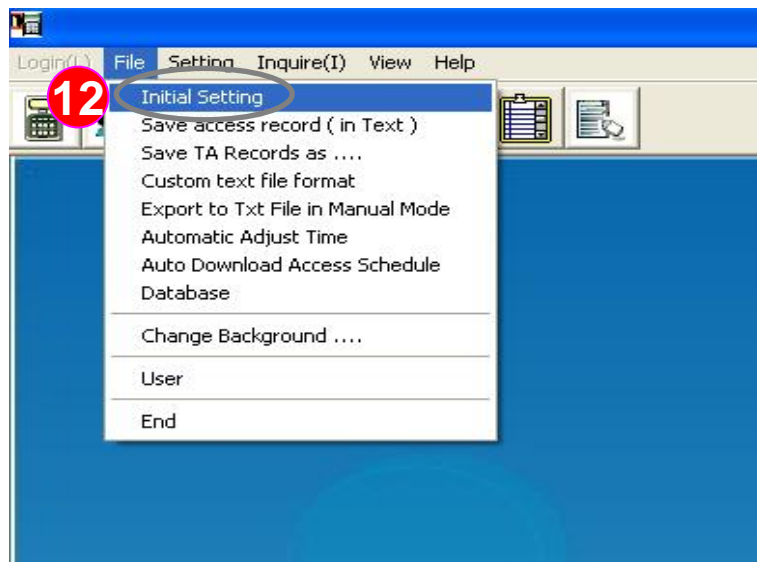
**10** :You could find all access controller records, it means the result of covering database process is successful.



# FAQ: How to transfer access and time attendance software database to another computer when the computer had breakdown



**Step 4. Please double check whether the new PC access control software and card reader connection settings are the same as the old PC. The following steps will help users to check, with "Initial setting ", " Connect Setting" and " Reader setting "**

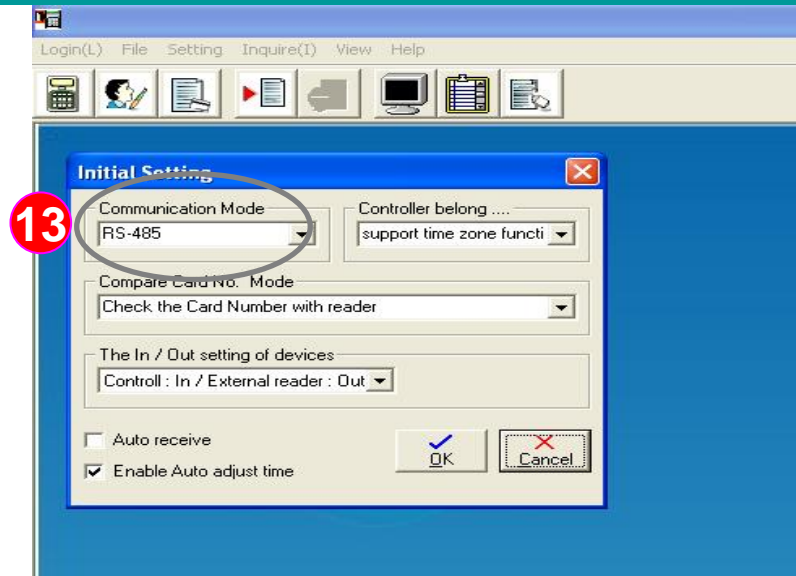


**11** :Access controller software request all connection setting from controller registry upload to software, in other words, once change new computer, please make sure below connecting setting steps again, (As the drawing shows on top left drawing, this case for windows XP registry editor)

**12** :Click the function menu "File" and drop-down display window then click the "Initial Setting "



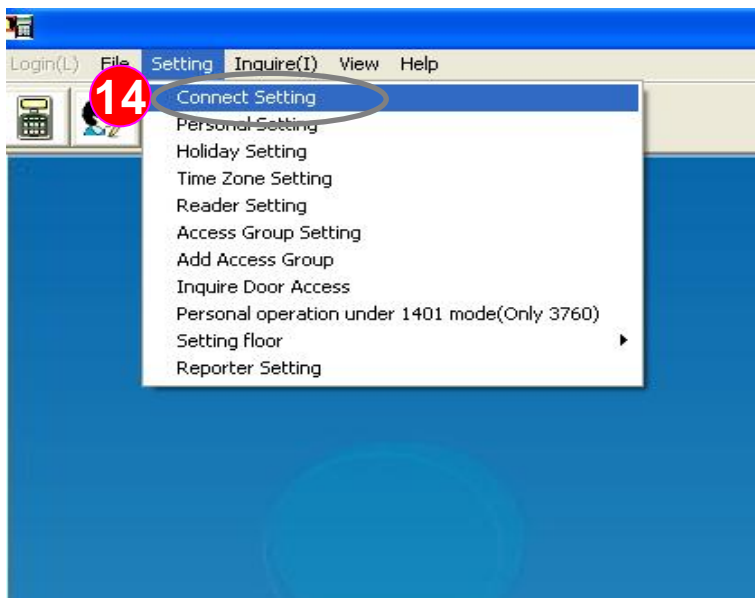
# FAQ: How to transfer access and time attendance software database to another computer when the computer had breakdown



**Step 4. Please double check whether the new PC access control software and card reader connection settings are the same as the old PC, the following steps will help users to check, with "Initial setting ", " Connect Setting" and " Reader setting "**

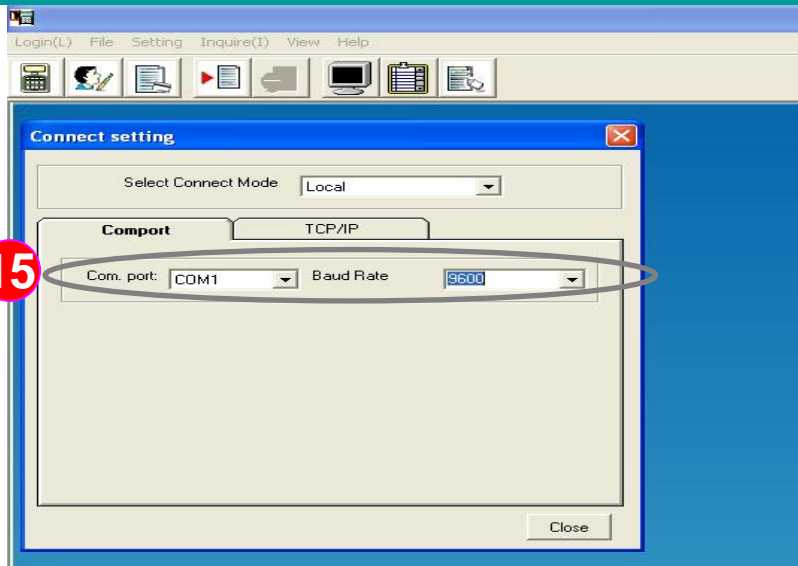
**13** :Please check the " communication mode" option setting is the same as the old computer (shown at top-left drawing), after finished ,and press "OK "

\* Note: Once complete database setting steps, other pervious settings will be applied automatically.



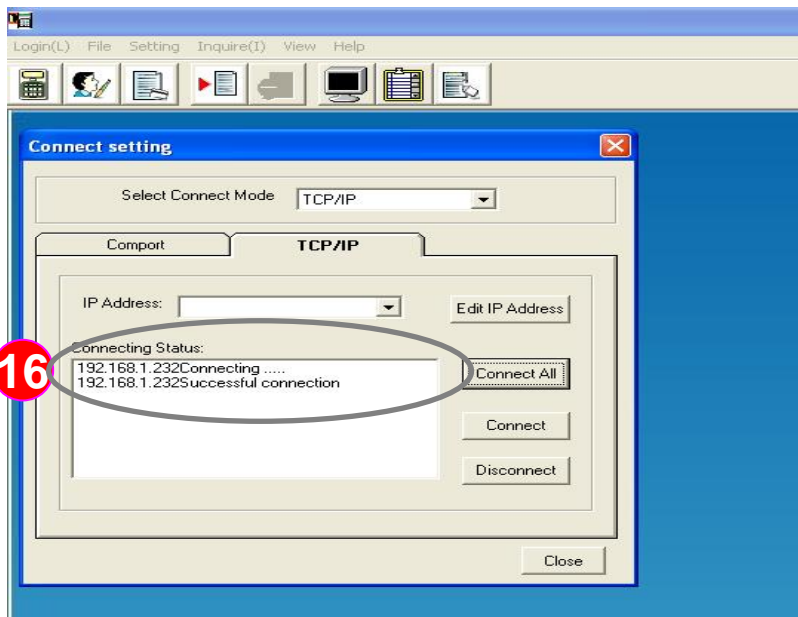
**14** :Click the menu "Setting (S)" and drop-down display window then click"Connect Setting"

# FAQ: How to transfer access and time attendance software database to another computer when the computer had breakdown



**Step 4. Please double check whether the new PC access control software and card reader connection settings are the same as the old PC, the following steps will help users to check, with "Initial setting ", " Connect Setting" and " Reader setting "**

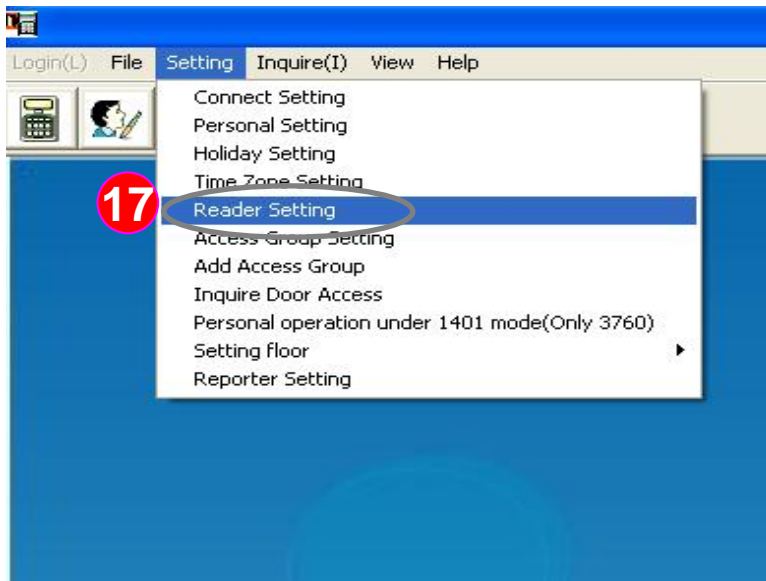
**15** :If the old software setting "Select Connection Mode" as a " Local (Com port)" please be alert port number is consistent with the computer's physical port number. As Baud Rate, whether the setting of the same as card reader (shown on top-left drawing) , then press "Close "



**16** : If the old software setting "Select Connect Mode" as a "TCP / IP", please click "Connect All", the software detects your "previous" set of TCP / IP devices automatically (as left on the figure shown) then press "Close" to finish.

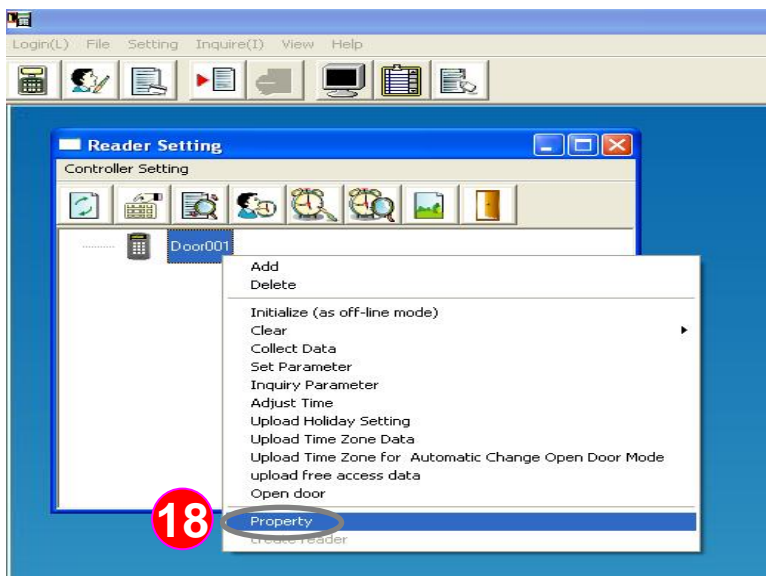
\*Note: Once complete covered database setting, the software will be applied to the original IP address setting directly.

# FAQ: How to transfer access and time attendance software database to another computer when the computer had breakdown



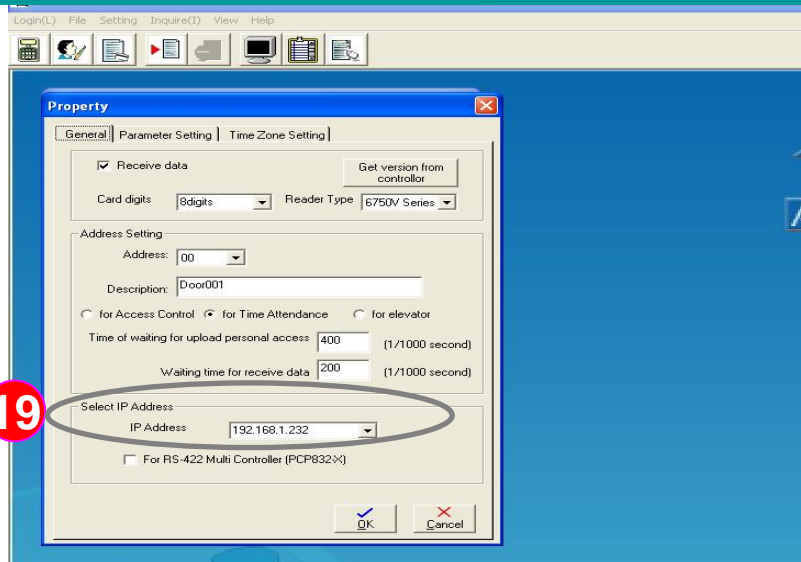
**Step 4. Please double check whether the new PC access control software and card reader connection settings are the same as the old PC, the following steps will help users to check, with "Initial setting ", " Connect Setting" and " Reader setting "**

**17** :Click the menu "Setting (S) " and drop-down display window then click "Reader Setting"



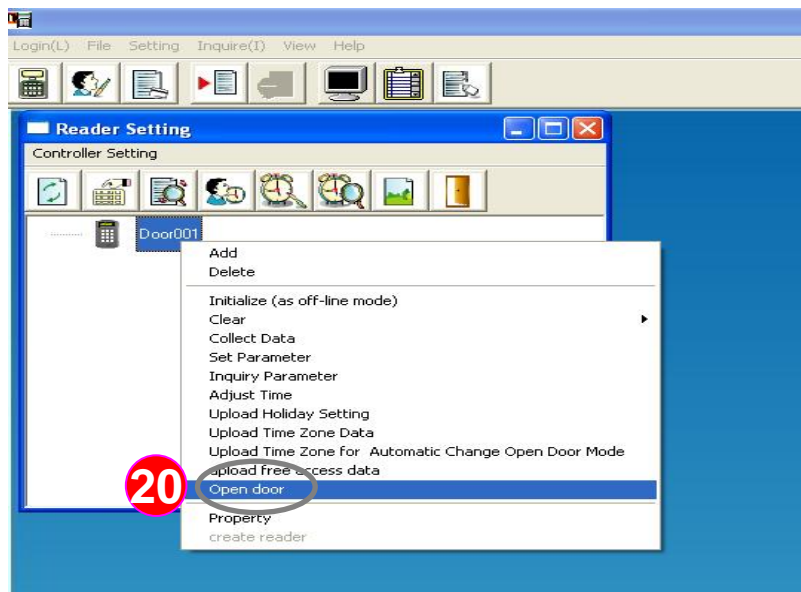
**18** :In the " Reader setting ",select the reader you need ,press right-click mouse button, the system will drop-down function menus, use left mouse button to select "Property".

# FAQ: How to transfer access and time attendance software database to another computer when the computer had breakdown



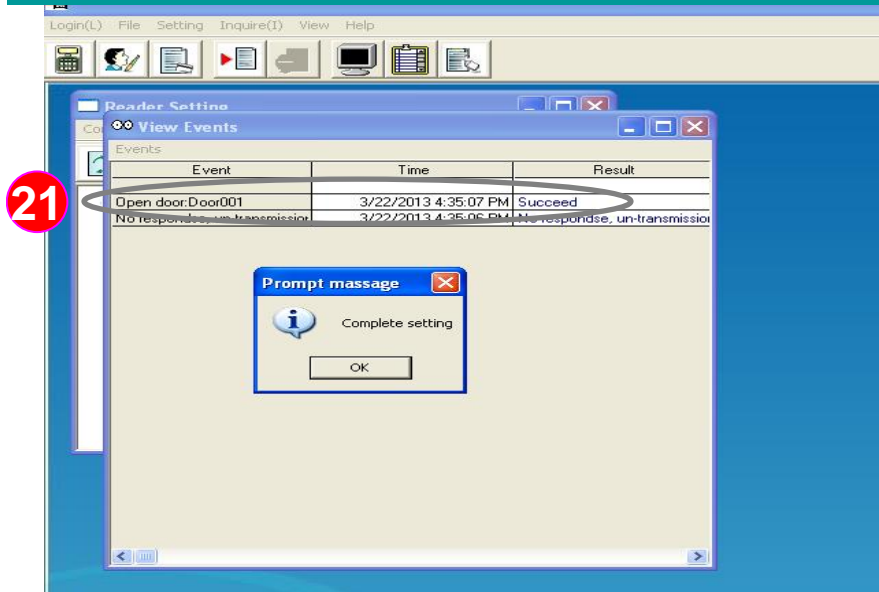
**Step 4. Please double check whether the new PC access control software and card reader connection settings are the same as the old PC, the following steps will help users to check, with "Initial setting ", " Connect Setting" and " Reader setting "**

**19** :Select the "General" sheet, and should find the pre-set data were also existed. Please note if set the connection to "TCP / IP", please ensure to "Select IP Address" field, and select originally set down the IP address, and finally click "OK" button to save the settings.



**20** :Select the card reader you need and press right-click mouse button the system will drop-down function menus. Select "Open door", and see if test connection is successful.

# FAQ: How to transfer access and time attendance software database to another computer when the computer had breakdown



**Step 4. Please double check whether the new PC access control software and card reader connection settings are the same as the old PC, the following steps will help users to check, with "Initial setting ", " Connect Setting" and " Reader setting "**

**21** :At this step, please "view events" window, and check if "open door "result is "Succeed ", If successful, it means the database to be transfer correctly.

